



PARTS CATALOGUE

FZ150 (3C11) INDONESIA



1F3C1-460E1

()

FZ150
PARTS CATALOGUE
©2007 by Yamaha Motor Co., Ltd.
1st edition, March 2007
All rights reserved.
Any reprinting or unauthorized use
without the written permission of
Yamaha Motor Co., Ltd.
is expressly prohibited.
Printed in Japan.

FOREWORD

This Parts Catalogue is related to the parts for the model(s) on the cover page. When you are ordering replacement parts, please refer to this Parts Catalogue and quote both part numbers and part names correctly.

1. Modifications or additions which have been made after the issue of the Parts Catalogue will be announced in the Parts News.
It is advisable that you make the necessary corrections to the Parts Catalogue according to the Parts News.

2. Abbreviations

The following abbreviations are used in this Parts Catalogue.

“UR” Use specified parts number.

“UN” Use as many as needed.

“AP” Alternate Parts

“LM” Locally Made (Parts need to be ordered locally)

“F#” Frame No. (Applicable machine No.)

“O/S” Over Size

3. The number of components for assembly

- Parts, which are to be supplied in an assembly, are listed with a dot (.) in front of the part name as shown below.
- The numeral appearing to the right of each component part indicates the quantity of parts for each assembly unit.

PART NO.	DESCRIPTION	Q'TY	REMARKS
2F5-83310-60	FRONT FLASHER LIGHT ASSY	2	
115-83311-60	.BULB (6V-18W)	1	

4. Applicable colours of graphics are represented in the “REMARKS” as shown below.

PART NO.	DESCRIPTION	Q'TY	REMARKS
2N4-24110-00-X5	FUEL TANK COMP.	2	MXR
3J1-24240-10	.GRAPHIC, FUEL TANK	1	FOR MXR

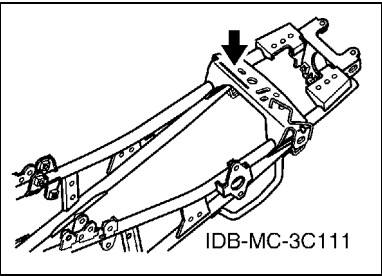
5. Note that the illustrations for reference in finding parts numbers are not to be used for assembling. When assembling, please use the applicable service manual.

6. The asterisk (*) before a reference number indicates modified items after the first edition.

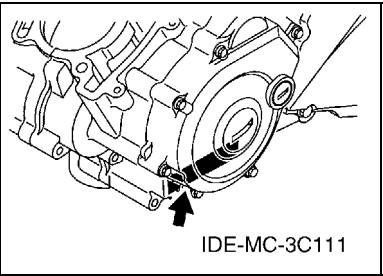
FOREWORD

7. Applicable Serial No.

Frame Serial No.



Engine Serial No.



8. Applicable Colour Code (The (*) mark shows Model colour.)

Abbreviation	Colour Name	Colour Code
DPBMC(*)	DEEP PURPLISH BLUE METALLIC C	0564
DRMK(*)	DEEP RED METALLIC K	0918
SL	SILVER	0035
YB(*)	YAMAHA BLACK	0033

9. Applicable Starting Serial No.

Frame Serial No.

Serial No.	Name Of Q'ty Column	Model Code

Engine Serial No.

Serial No.	Name Of Q'ty Column	Model Code

CONTENTS

ENGINE

CYLINDER HEAD	1
CRANKSHAFT & PISTON	2
VALVE	4
CAMSHAFT & CHAIN	5
WATER PUMP	6
RADIATOR & HOSE	7
OIL PUMP	8
INTAKE	9
EXHAUST	11
CRANKCASE	12
CRANKCASE COVER 1	13
STARTER	14
STARTER CLUTCH	15
CLUTCH	16
TRANSMISSION	18
SHIFT CAM & FORK	20
SHIFT SHAFT	21

CHASSIS

FRAME	22
FENDER	23
SIDE COVER	24
REAR ARM & SUSPENSION	27
STEERING	28
FRONT FORK	29
FUEL TANK	31
SEAT	32
FRONT WHEEL	33
FRONT BRAKE CALIPER	34
REAR WHEEL	35
STEERING HANDLE & CABLE	37
FRONT MASTER CYLINDER	38
STAND & FOOTREST	39
GENERATOR	41
STARTING MOTOR	42
FLASHER LIGHT	43
METER	44
HEADLIGHT	45
TAILLIGHT	46
HANDLE SWITCH & LEVER	47
ELECTRICAL 1	48

ELECTRICAL 2	49
--------------------	----

INDEX

NUMERICAL INDEX	50
-----------------------	----

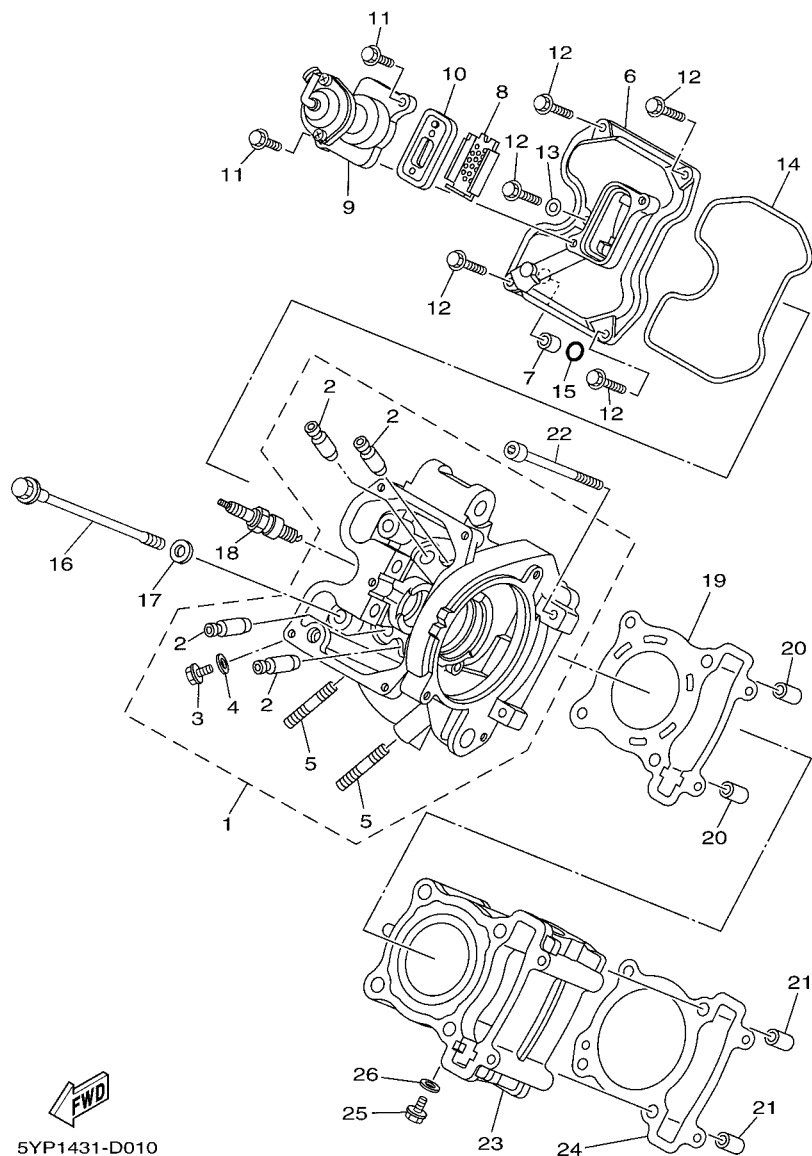


FIG. 1 CYLINDER HEAD

REF. NO.	PART NO.	DESCRIPTION	3C11				REMARKS
1	1S7-E1102-00	CYLINDER HEAD ASSY	1				
2	1S7-E1133-10	.GUIDE, VALVE 1	4				
3	90153-06803	.SCREW, HEXAGON	1				
4	90430-06014	.GASKET	1				
5	95617-08620	.BOLT, STUD	2				
6	1S7-E1191-00	COVER, CYLINDER HEAD 1	1				
7	91811-10005	PIN, DOWEL	1				
8	1S7-E482K-00	PLATE	1				
9	1S7-E4840-00	AIR CUT VALVE ASSY	1				
10	1S7-E4890-00	REED VALVE ASSY	1				
11	95027-06014	BOLT, FLANGE	2				
12	95027-06020	BOLT, FLANGE	5				
13	90430-06014	GASKET	1				
14	1S7-E1193-00	GASKET, HEAD COVER 1	1				
15	93210-11803	O-RING	1				
16	90105-08850	BOLT, FLANGE	4				
17	90201-08609	WASHER, PLATE	4				
18	94700-00872	PLUG, SPARK (NGK CR8E)	1				UR
	94700-00873	PLUG, SPARK (U24ESR-N)	1				UR
19	3C1-E1181-00	GASKET, CYLINDER HEAD 1	1				
20	91810-14809	PIN, DOWEL	2				
21	91810-14809	PIN, DOWEL	2				
22	91317-06100	BOLT	2				
23	3C1-E1311-00	CYLINDER 1	1				
24	1S7-E1351-00	GASKET, CYLINDER	1				
25	90153-06803	SCREW, HEXAGON	1				
26	90430-06014	GASKET	1				

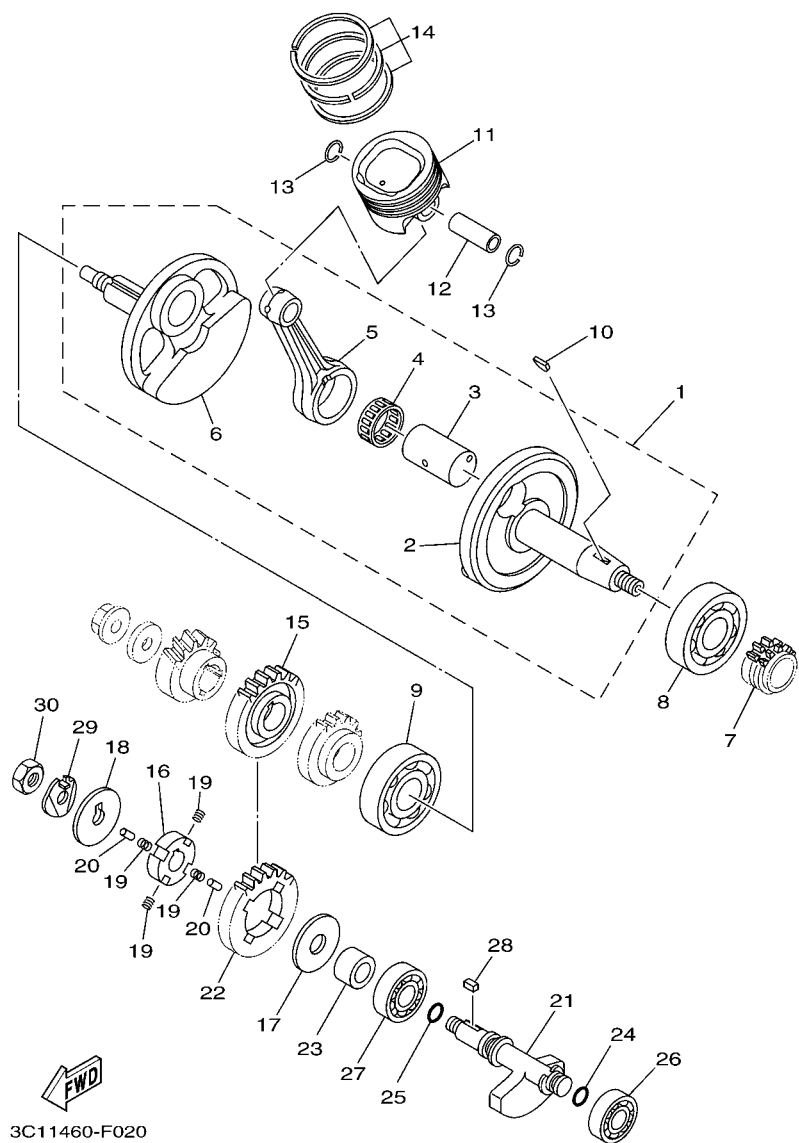


FIG. 2 CRANKSHAFT & PISTON

REF. NO.	PART NO.	DESCRIPTION	3C11				REMARKS
1	3C1-E1400-00	CRANKSHAFT ASSY	1				
2	3C1-E1412-00	.CRANK 1	1				
3	3C1-11681-00	.PIN, CRANK 1	1				
4	93310-528YB	.BEARING	1				
5	3C1-E1651-10	.ROD, CONNECTING	1				
6	3C1-E1422-00	.CRANK 2	1				
7	3C1-E1549-00	SPROCKET, CAM CHAIN	1				
8	93306-305YF	BEARING	1				
9	93306-305X7	BEARING	1				
10	90280-03017	KEY, WOODRUFF	1				
11	3C1-E1631-00	PISTON (STD)	1				
12	3C1-E1633-00	PIN, PISTON	1				
13	93450-16115	CIRCLIP	2				
14	3C1-11603-00	PISTON RING SET (STD)	1				
15	3C1-11536-00	GEAR, DRIVE	1				
16	3C1-E1496-00	BOSS, BUFFER	1				
17	90201-15821	WASHER, PLATE	1				
18	90214-10800	WASHER, CLAW	1				
19	90501-16800	SPRING, COMPRESSION	4				
20	93604-08800	PIN, DOWEL	2				
21	3C1-11454-00	WEIGHT 1	1				
22	3C1-11531-00	GEAR, BALANCE WEIGHT	1				
23	90387-15810	COLLAR	1				
24	93210-11805	O-RING	1				
25	93210-13803	O-RING	1				
26	93306-252Y9	BEARING	1				
27	93306-203XK	BEARING	1				

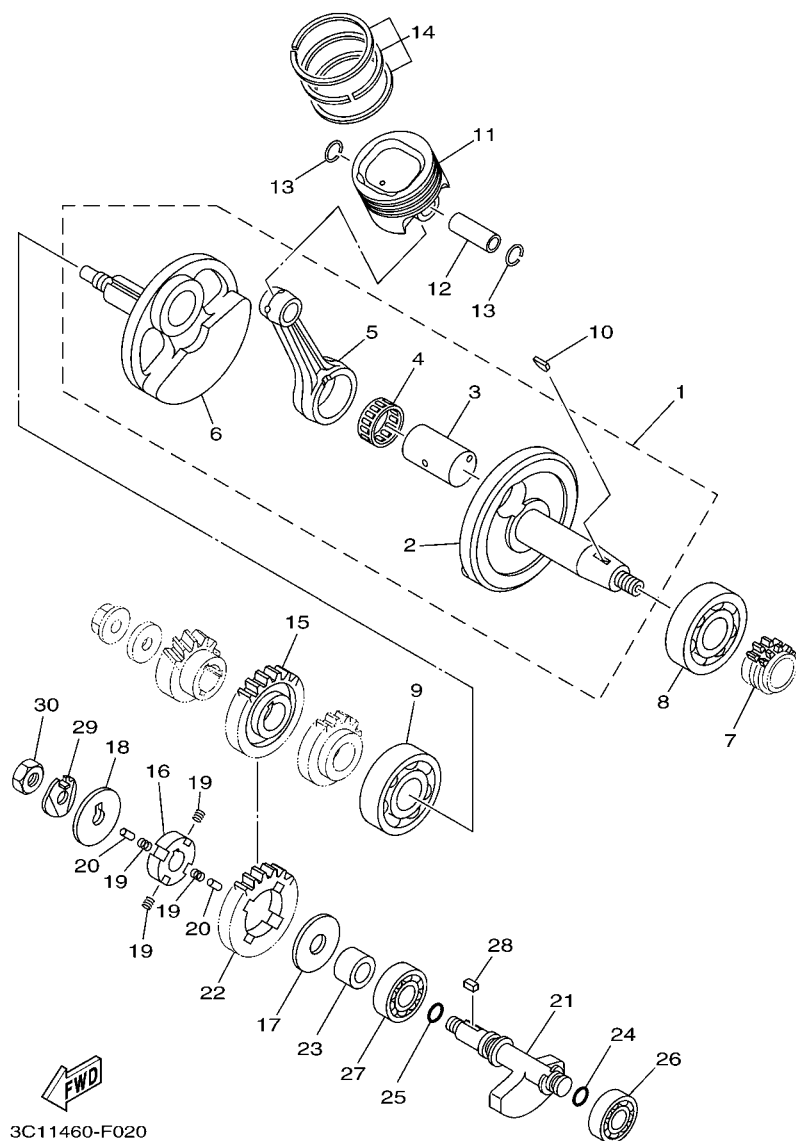


FIG. 2 CRANKSHAFT & PISTON

[illegible]

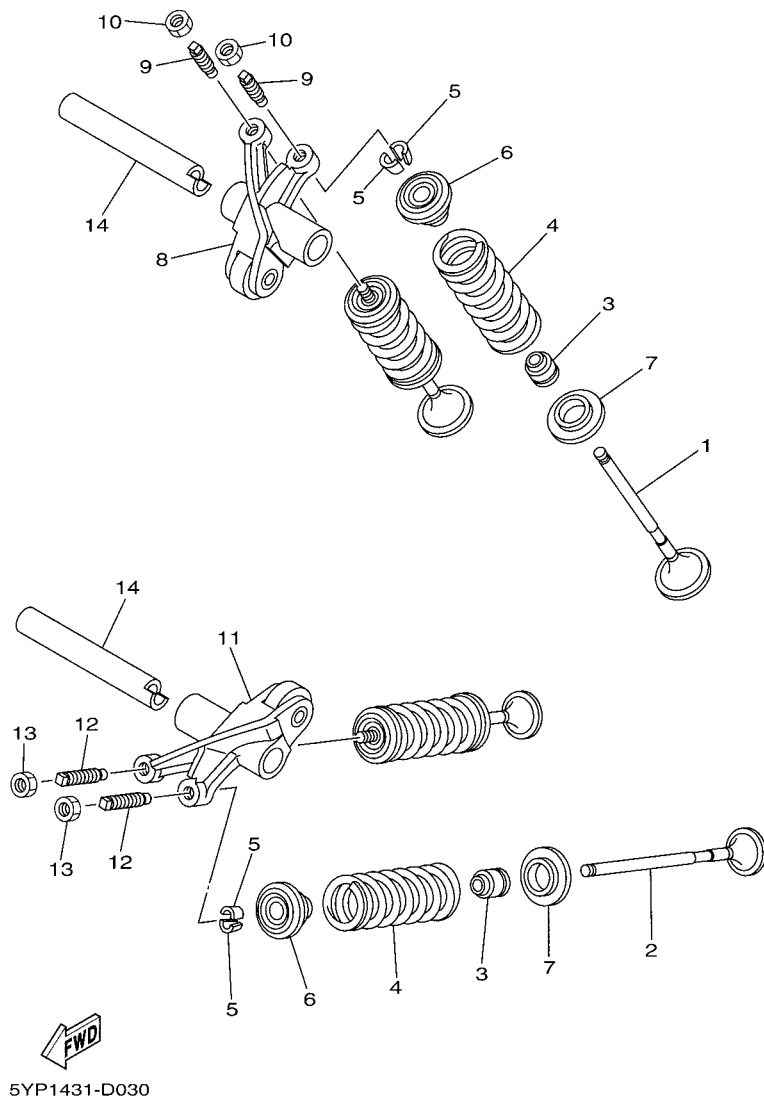
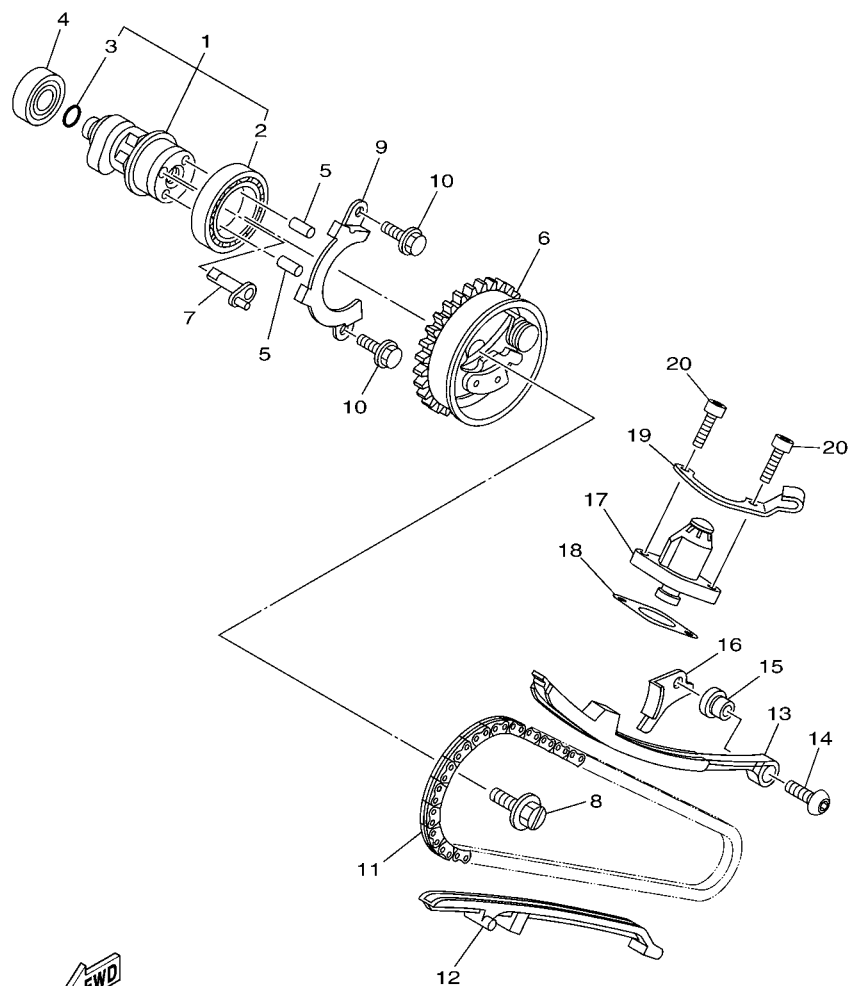


FIG. 3 VALVE




 3C11460-F040

FIG. 4 CAMSHAFT & CHAIN

REF. NO.	PART NO.	DESCRIPTION	3C11				REMARKS
1	3C1-E2170-00	CAMSHAFT ASSY 1	1				
2	93306-906Y0	.BEARING	1				
3	93210-09806	.O-RING	1				
4	93306-001X2	BEARING	1				
5	99480-05010	PIN	2				
6	3C1-E2280-00	DECOMPRESSION ASSY	1				
7	1S7-E2288-00	CAM, DECOMPRESSION	1				
8	5YP-E2157-00	BOLT	1				
9	1S7-E111F-00	PLATE	1				
10	95027-06010	BOLT, FLANGE	2				
11	94568-A8096	CHAIN	1				
12	5YP-E2231-00	GUIDE, STOPPER 1	1				
13	1B9-12241-00	GUIDE, STOPPER 2	1				
14	90149-06829	SCREW	1				
15	3C1-E5598-00	COLLAR	1				
16	3C1-E2256-00	COVER, CHAIN	1				
17	2P2-E2210-00	TENSIONER ASSY, CAM CHAIN	1				
18	5MX-E2213-00	GASKET, TENSIONER CASE	1				
19	3C1-E5441-00	HOLDER, CLUTCH CABLE	1				
20	91317-06020	BOLT	2				

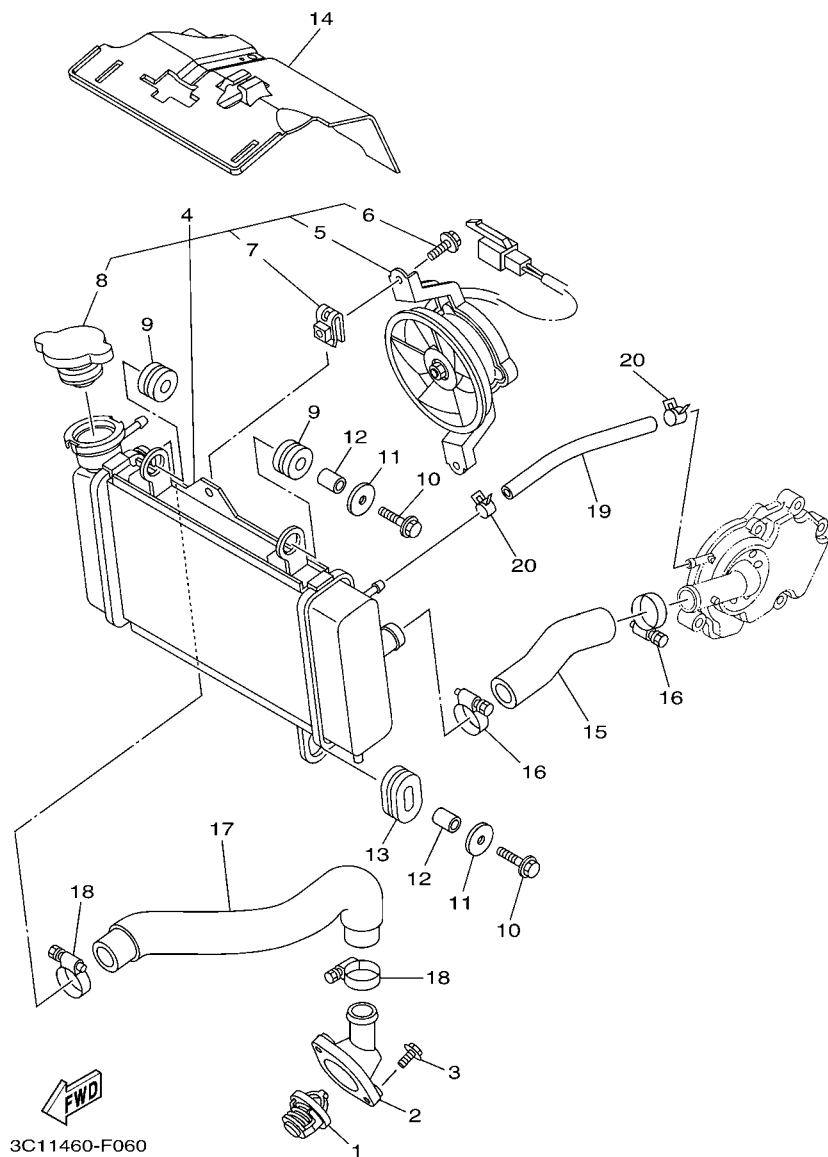


FIG. 6 RADIATOR & HOSE

REF. NO.	PART NO.	DESCRIPTION	3C11				REMARKS
1	5YP-12411-00	THERMOSTAT	1				
2	1S7-E2413-00	COVER, THERMOSTAT	1				
3	95027-06020	BOLT, FLANGE	2				
4	3C1-E240A-00	RADIATOR ASSY	1				
5	5YP-E2405-00	.BLOWER ASSY	1				
6	5YP-E2675-00	.BOLT, BLOWER HOLDING	2				
7	5YP-E2671-00	.NUT 1	2				
8	5YP-E2462-00	.CAP, RADIATOR	1				
9	90480-15363	GROMMET	2				
10	95827-06025	BOLT, FLANGE	2				
11	90201-06072	WASHER, PLATE	2				
12	90387-064W3	COLLAR	2				
13	90480-01803	GROMMET	1				
14	3C1-E2467-00	COVER, RADIATOR	1				
15	3C1-E2481-00	PIPE 1	1				
16	90450-28801	HOSE CLAMP ASSY	2				
17	3C1-E2482-00	PIPE 2	1				
18	90450-28801	HOSE CLAMP ASSY	2				
19	90445-12804	HOSE	1				
20	90467-10805	CLIP	2				

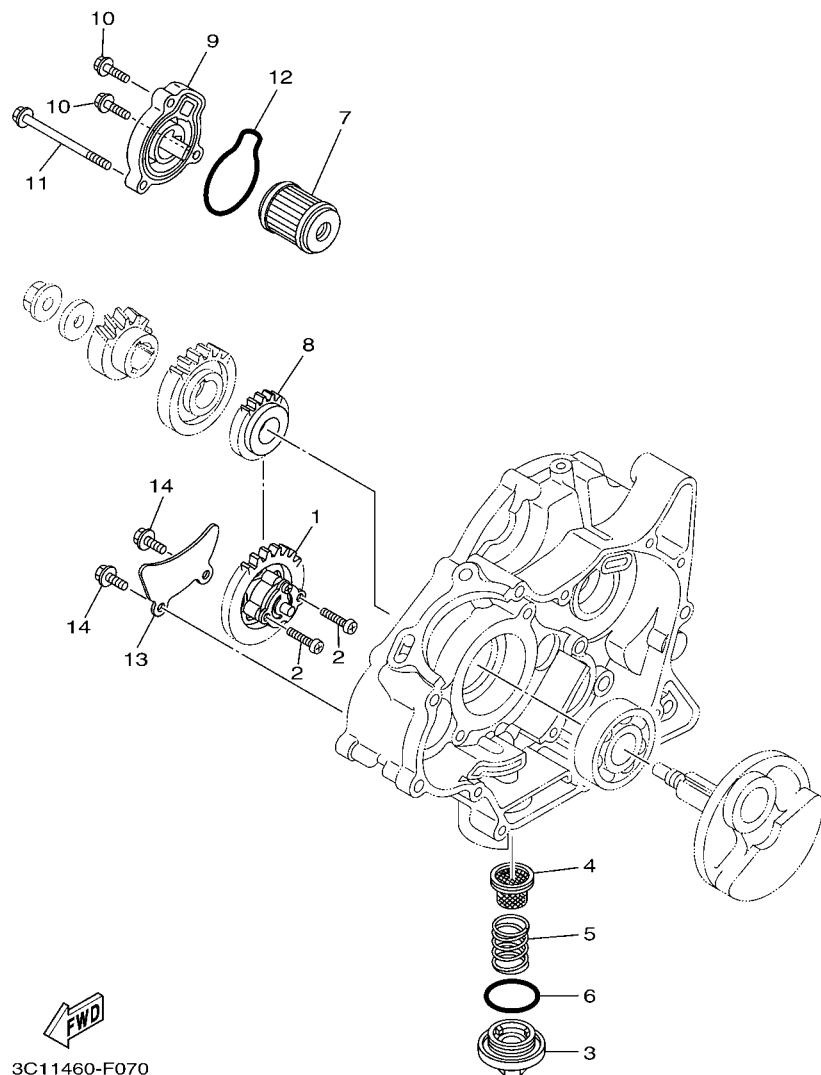


FIG. 7 OIL PUMP

REF. NO.	PART NO.	DESCRIPTION	3C11				REMARKS
1	3C1-E3300-00	OIL PUMP ASSY	1				
2	98507-05025	SCREW, PAN HEAD	2				
3	1S7-E5351-00	PLUG, DRAIN	1				
4	1S7-E3411-00	STRAINER, OIL	1				
5	90501-18576	SPRING, COMPRESSION	1				
6	93210-34802	O-RING	1				
7	1S7-E3440-00	ELEMENT ASSY, OIL CLEANER	1				
8	3C1-E3324-00	GEAR, PUMP DRIVE	1				
9	3C1-E3447-00	COVER, OIL ELEMENT	1				
10	9502L-06020	BOLT, FLANGE	2				
11	9502L-06080	BOLT, FLANGE	1				
12	93210-54805	O-RING	1				
13	3C1-E3327-00	COVER, PUMP GEAR	1				
14	9502L-06012	BOLT, FLANGE	2				

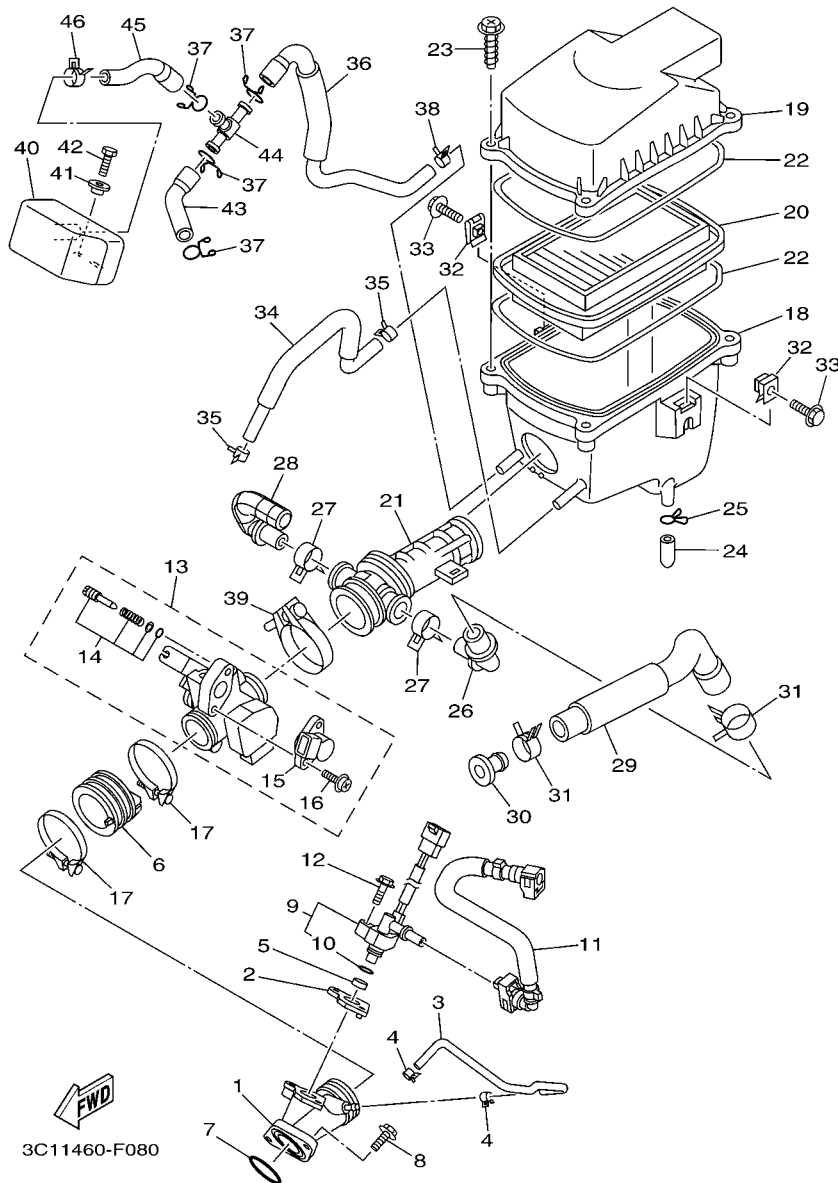


FIG. 8 INTAKE

REF. NO.	PART NO.	DESCRIPTION	3C11				REMARKS
1	3C1-E3585-00	MANIFOLD	1				
2	3C1-E3556-00	GASKET, MANIFOLD	1				
3	3C1-E3542-00	HOSE, VACUUM SENSING 1	1				
4	90467-08092	CLIP	2				
5	90430-09800	GASKET	1				
6	3C1-E3586-00	JOINT, CARBURETOR 1	1				
7	93210-32807	O-RING	1				
8	9502N-06020	BOLT, FLANGE	2				
9	3C1-13770-00	INJECTOR ASSY	1				
10	5CA-14147-00	.O-RING	1				
11	3C1-13971-00	PIPE, FUEL 1	1				
12	95817-06030	BOLT, FLANGE	1				
13	3C1-E3750-00	THROTTLE BODY ASSY	1				
14	5JW-14104-00	.AIR SCREW SET	1				
15	2S5-1410H-00	.FUEL CUT SOLENOID VALVE	1				
16	1S4-14216-00	.SCREW	1				
17	5MX-E3575-01	BAND	2				
18	3C1-E4411-00	CASE, AIR CLEANER 1	1				
19	3C1-E4412-00	CAP, CLEANER CASE 1	1				
20	3C1-E4450-00	ELEMENT ASSY, AIR CLEANER	1				
21	3C1-E4453-00	JOINT, AIR CLEANER 1	1				
22	3C1-E4452-00	SEAL	2				
23	90163-05803	SCREW, TAPPING	4				
24	5TL-E443E-00	PIPE, DRAIN	1				
25	90467-12800	CLIP	1				
26	3C1-E4485-00	PIPE, JOINT	1				
27	90467-20050	CLIP	2				

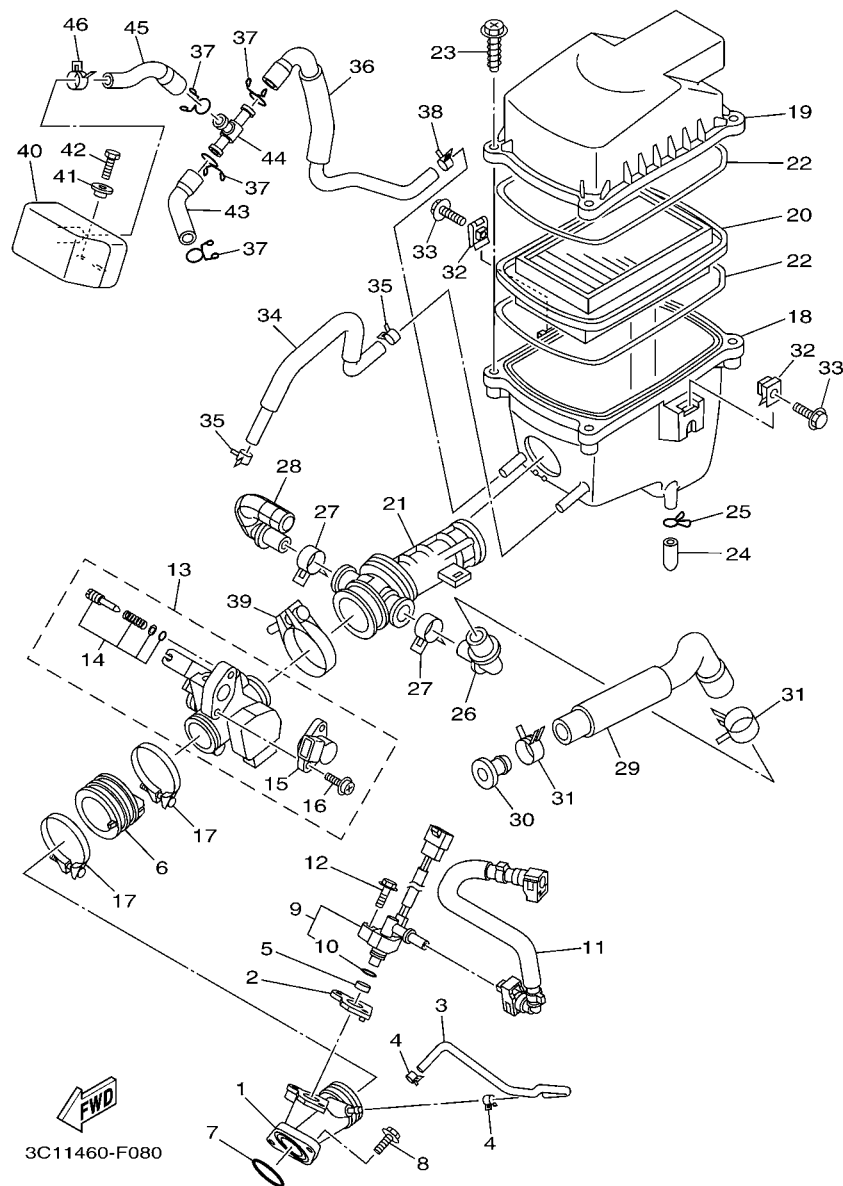


FIG. 8 INTAKE

REF. NO.	PART NO.	DESCRIPTION	3C11				REMARKS
28	3C1-E4419-00	PIPE	1				
29	3C1-E441J-00	PIPE, SILENCER	1				
30	90338-16008	PLUG	1				
31	90467-23801	CLIP	2				
32	90183-06802	NUT, SPRING	2				
33	90119-06051	BOLT, WITH WASHER	2				
34	3C1-E1166-00	PIPE, BREATHER 1	1				
35	90467-13064	CLIP	2				
36	3C1-E4882-00	HOSE, BEND 2	1				
37	90467-15012	CLIP	4				
38	90467-13802	CLIP	1				
39	90450-39802	HOSE CLAMP ASSY	1				
40	3C1-E4877-00	RESONATOR	1				
41	90387-068S1	COLLAR	2				
42	97027-06014	BOLT	2				
43	3C1-E4881-00	HOSE, BEND 1	1				
44	90413-13800	WAY 3	1				
45	3C1-E4883-00	HOSE, BEND 3	1				
46	90467-16800	CLIP	1				



3C11460-F100

FIG. 10 CRANKCASE

[illegible]

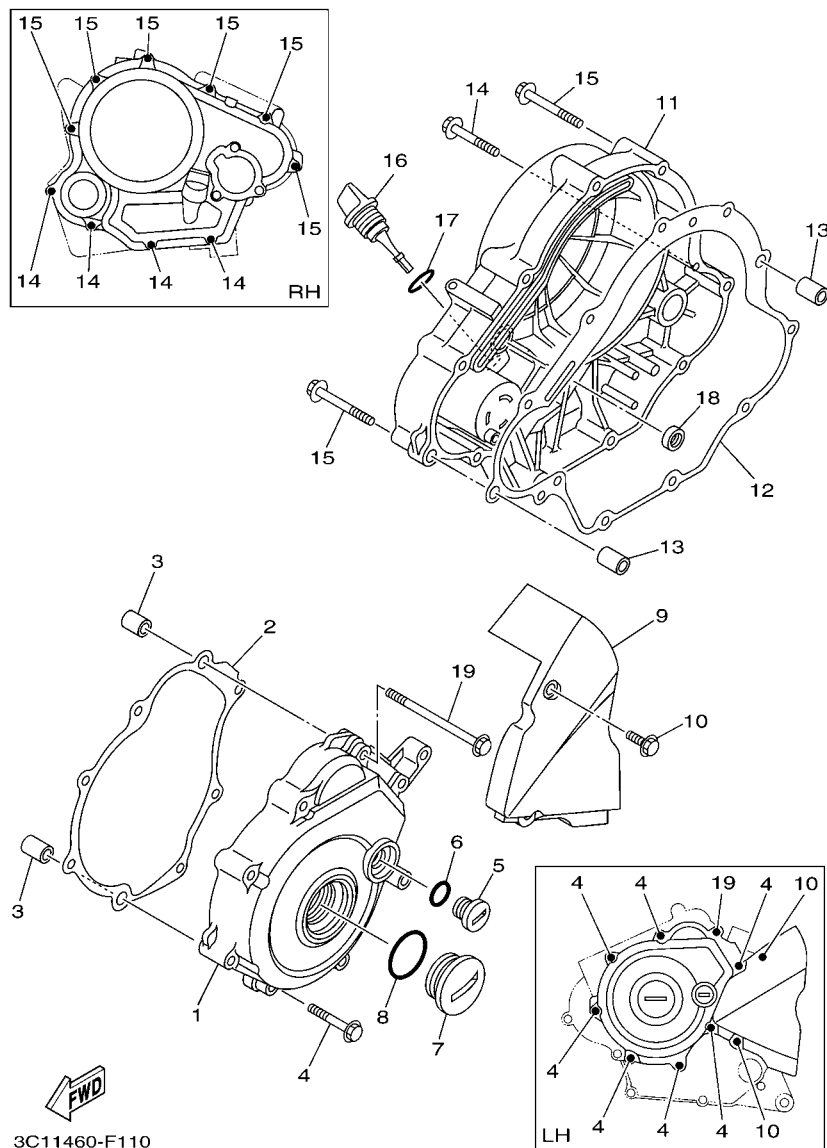


FIG. 11 CRANKCASE COVER 1

[illegible]

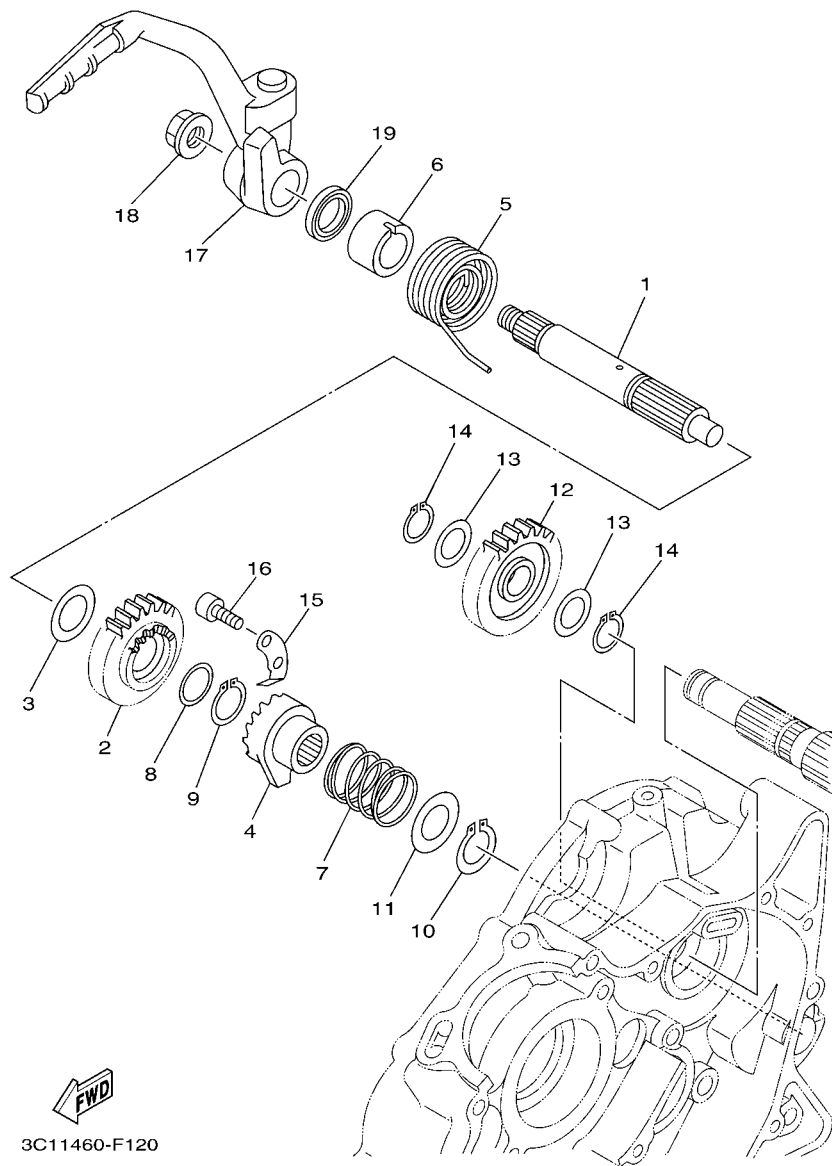


FIG. 12 STARTER

REF. NO.	PART NO.	DESCRIPTION	3C11				REMARKS
1	3C1-E5661-00	AXLE, KICK	1				
2	3C1-E5641-00	GEAR, KICK	1				
3	90201-20815	WASHER, PLATE	1				
4	3C1-E5671-00	WHEEL, RATCHET	1				
5	90508-26803	SPRING, TORSION	1				
6	3C1-E5666-00	SPACER	1				
7	3C1-E5767-00	SPRING	1				
8	90201-20685	WASHER, PLATE (T=0.5)	1				
9	93410-20038	CIRCLIP	1				
10	99009-19400	CIRCLIP	1				
11	90201-19800	WASHER, PLATE	1				
12	3C1-E5651-00	GEAR, KICK IDLE	1				
13	90201-175F6	WASHER, PLATE	2				
14	99009-17400	CIRCLIP	2				
15	3C1-E5674-00	GUIDE, RATCHET WHEEL	1				
16	91317-06016	BOLT	2				
17	3C1-E5620-00	KICK CRANK ASSY	1				
18	90179-12802	NUT	1				
19	93109-20800	OIL SEAL	1				

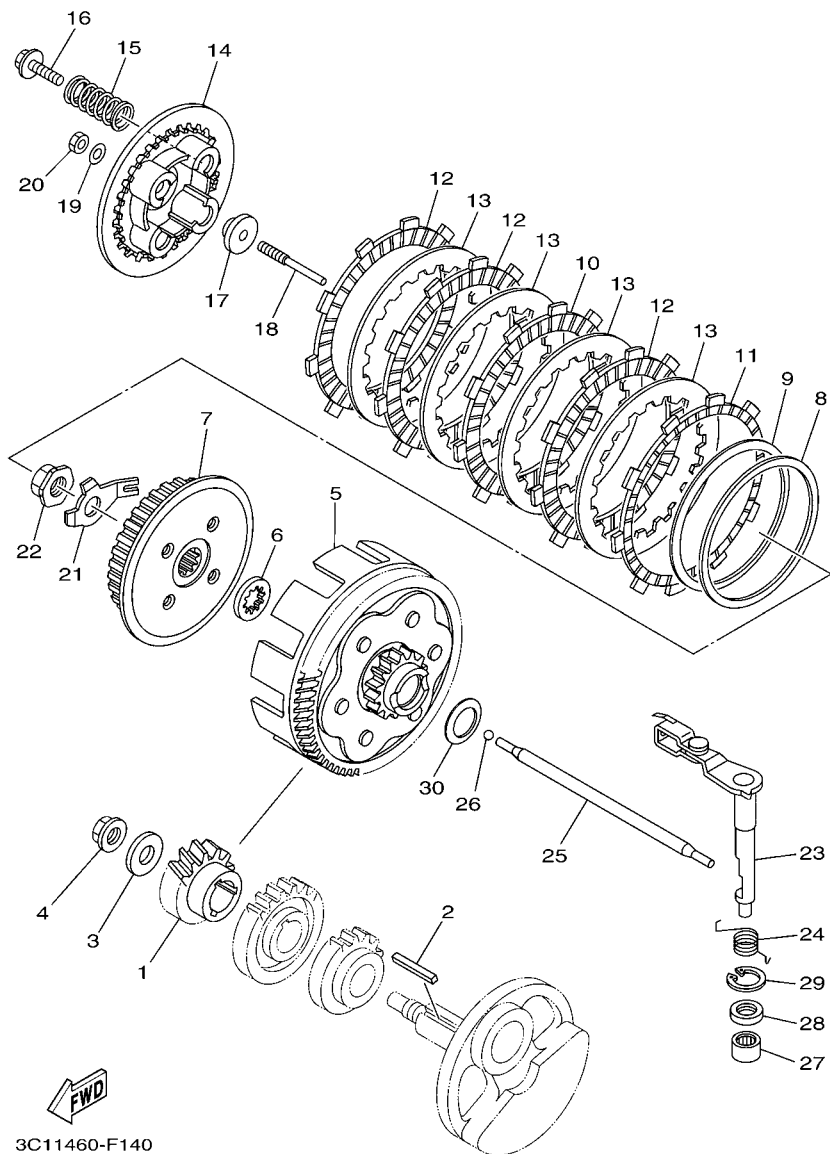


FIG. 14 CLUTCH

REF. NO.	PART NO.	DESCRIPTION	3C11				REMARKS
1	3C1-E6111-00	GEAR, PRIMARY DRIVE	1				
2	3C1-16193-00	KEY, FEATHER	1				
3	90201-12019	WASHER, PLATE	1				
4	90179-12802	NUT	1				
5	3C1-E6150-00	PRIMARY DRIVEN GEAR COMP.	1				
6	3C1-E6154-00	PLATE, THRUST 1	1				
7	3C1-E6371-00	BOSS, CLUTCH	1				
8	3C1-E6384-00	PLATE, SEAT	1				
9	3C1-E6383-00	SPRING, CLUTCH BOSS	1				
10	3C1-E6307-00	PLATE, FRICTION 3	1				
11	3C1-E6331-00	PLATE, FRICTION 2	1				
12	3C1-E6321-00	PLATE, FRICTION	3				
13	3C1-E6324-00	PLATE, CLUTCH 1	4				
14	3C1-E6351-00	PLATE, PRESSURE 1	1				
15	3C1-E6333-00	SPRING, CLUTCH 1	4				
16	3C1-E6337-00	SCREW, SPRING	4				
17	3C1-E6358-00	PLATE, PUSH	1				
18	3C1-E6356-00	ROD, PUSH 1	1				
19	3C1-E6144-00	WASHER	1				
20	3C1-E6344-00	NUT, ADJUSTING	1				
21	3C1-E6135-00	WASHER, LOCK	1				
22	90179-14001	NUT	1				
23	3C1-16380-00	PUSH LEVER ASSY	1				
24	3C1-E6345-00	SPRING, RETURN	1				
25	3C1-16357-00	ROD, PUSH 2	1				
26	93503-16003	BALL	1				
27	93315-112Y8	BEARING	1				

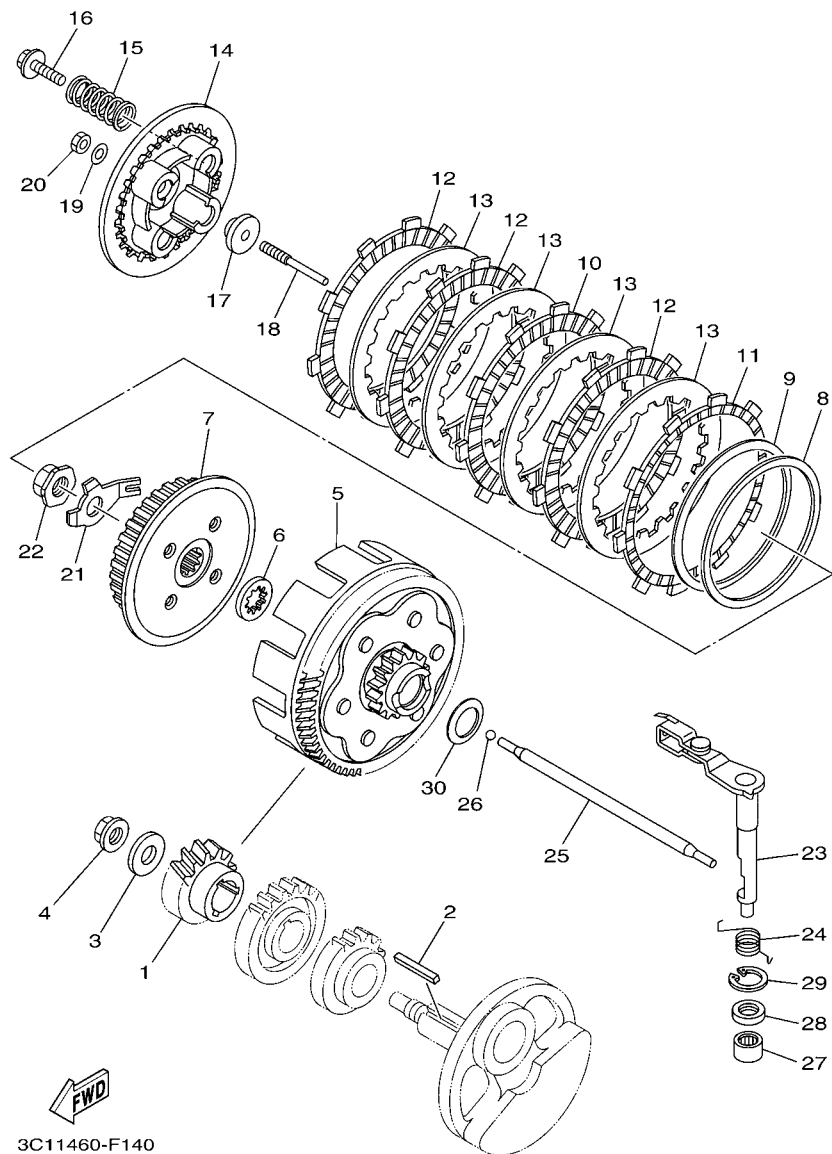


FIG. 14 CLUTCH

[illegible]

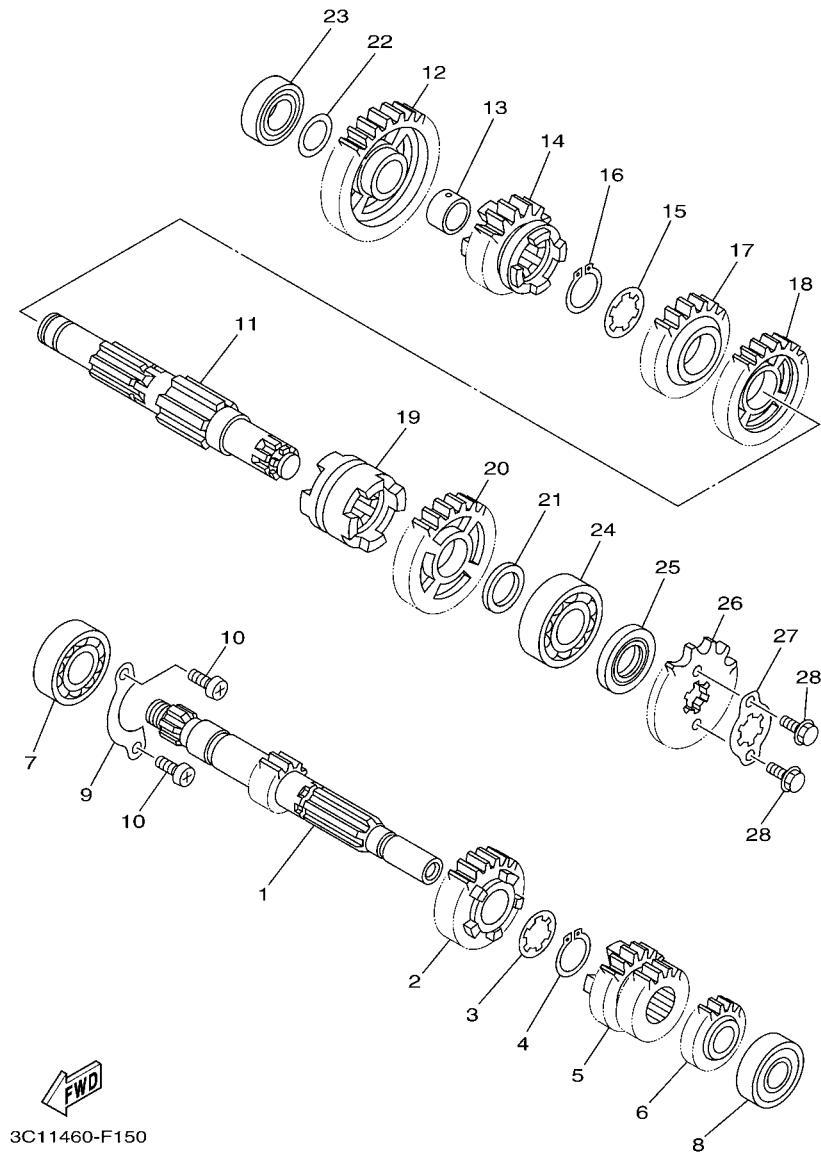


FIG. 15 TRANSMISSION

REF. NO.	PART NO.	DESCRIPTION	3C11				REMARKS
1	3C1-E7411-00	AXLE, MAIN (12T)	1				
2	3C1-E7151-00	GEAR, 5TH PINION (23T)	1				
3	90209-17285	WASHER	1				
4	93410-20038	CIRCLIP	1				
5	3C1-E7131-00	GEAR, 3RD PINION (21T/21T)	1				
6	3C1-E7121-00	GEAR, 2ND PINION (16T)	1				
7	93306-004XR	BEARING	1				
8	93306-252X1	BEARING	1				
9	3C1-E7471-00	PLATE, COVER	1				
10	98517-06012	SCREW, PAN HEAD	2				
11	3C1-E7402-00	DRIVE AXLE ASSY	1				
12	3C1-E7211-00	GEAR, 1ST WHEEL (34T)	1				
13	90387-17804	COLLAR	1				
14	3C1-E7251-00	GEAR, 5TH WHEEL (22T)	1				
15	90209-18208	WASHER	1				
16	93410-22039	CIRCLIP	1				
17	3C1-E7241-00	GEAR, 4TH WHEEL (24T)	1				
18	3C1-E7231-00	GEAR, 3RD WHEEL (30T)	1				
19	3C1-E7285-00	CLUTCH, DOG	1				
20	3C1-E7221-00	GEAR, 2ND WHEEL (30T)	1				
21	90201-20814	WASHER, PLATE	1				
22	90201-173F4	WASHER, PLATE	1				
23	93306-003Y7	BEARING	1				
24	93306-204YL	BEARING	1				
25	93102-20892	OIL SEAL	1				
26	93822-14815	SPROCKET, DRIVE (14T)	1				
27	3C1-E7456-00	HOLDER, SPROCKET	1				



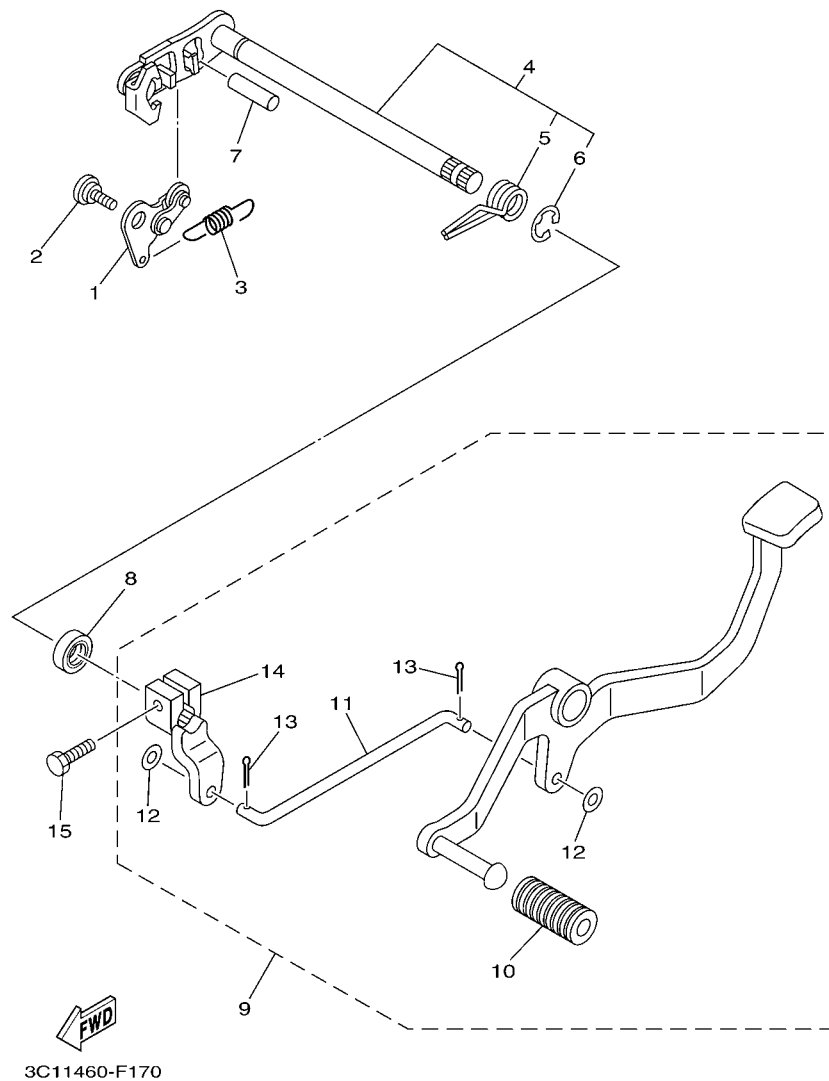


FIG. 17 SHIFT SHAFT

[illegible]

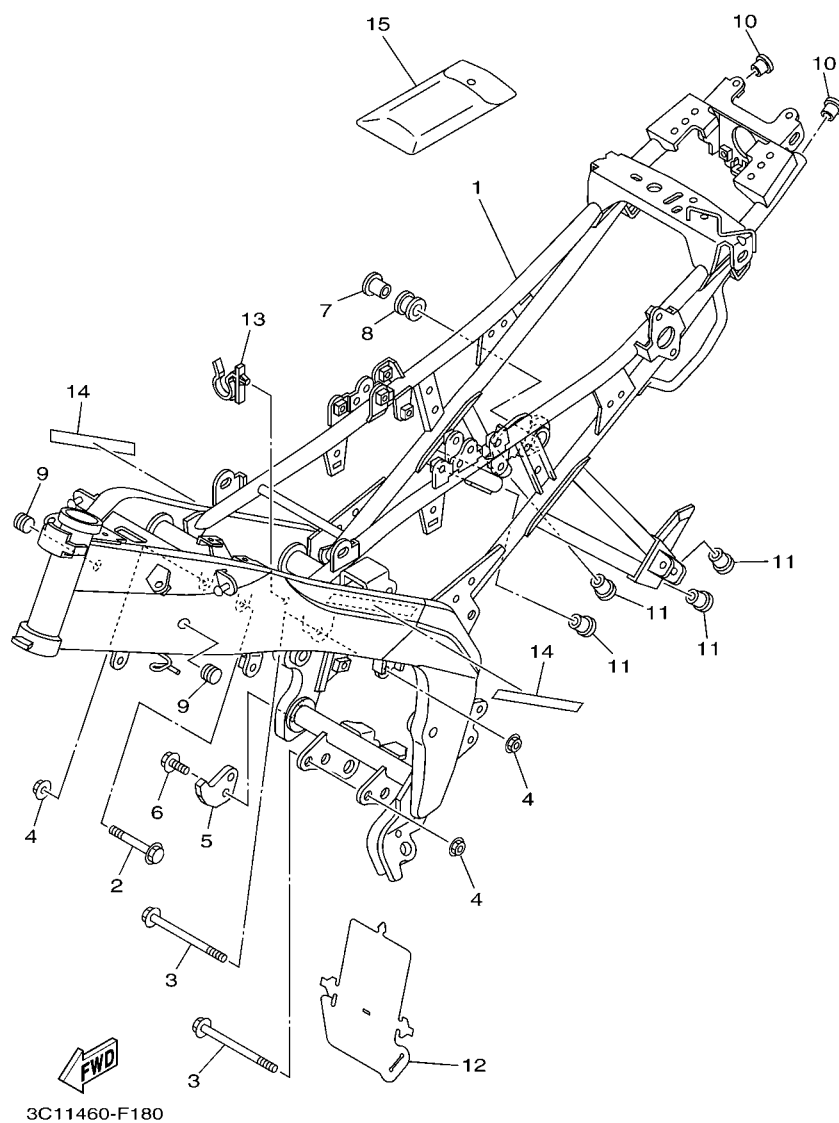


FIG. 18 FRAME

[illegible]

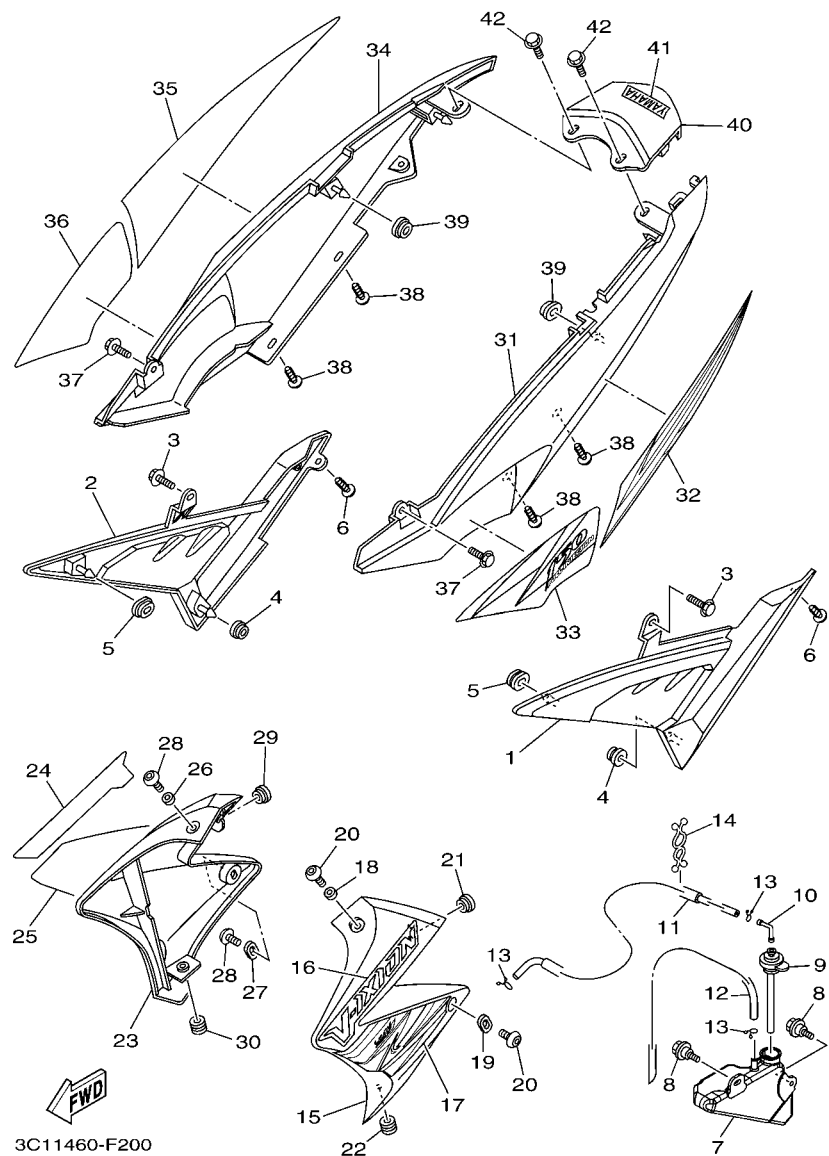


FIG. 20 SIDE COVER

REF. NO.	PART NO.	DESCRIPTION	3C11				REMARKS
1	3C1-F1711-00	COVER, SIDE 1	1				
2	3C1-F1721-00	COVER, SIDE 2	1				
3	90119-06044	BOLT, WITH WASHER	2				
4	90480-13567	GROMMET	2				
5	90480-01558	GROMMET	2				
6	97707-50014	SCREW, TRUSS HEAD TAPPING	2				
7	3C1-F1871-00	TANK, RECOVERY	1				
8	90109-06183	BOLT	2				
9	3C1-F1875-00	CAP	1				
10	3C1-F1828-00	ELBOW	1				
11	90445-08831	HOSE	1				
12	90445-08832	HOSE	1				
13	90467-08003	CLIP	3				
14	90464-14807	CLAMP	1				
15	3C1-F137W-00-33	SCOOP, AIR 1	1				UR FOR YB
	3C1-F137W-00-P0	SCOOP, AIR 1	1				UR FOR DRMK
	3C1-F137W-00-P1	SCOOP, AIR 1	1				UR FOR DPBMC
16	3C1-F137N-01	GRAPHIC 1	1				UR FOR YB
	3C1-F137N-11	GRAPHIC 1	1				UR FOR DRMK
	3C1-F137N-21	GRAPHIC 1	1				UR FOR DPBMC
17	3C1-F137P-00	GRAPHIC 2	1				UR FOR YB
	3C1-F137P-10	GRAPHIC 2	1				UR FOR DRMK
	3C1-F137P-20	GRAPHIC 2	1				UR FOR DPBMC
18	90387-06897	COLLAR	1				
19	3C1-F1748-00	COLLAR	1				
20	90149-06821	SCREW	2				
21	90480-12320	GROMMET	1				

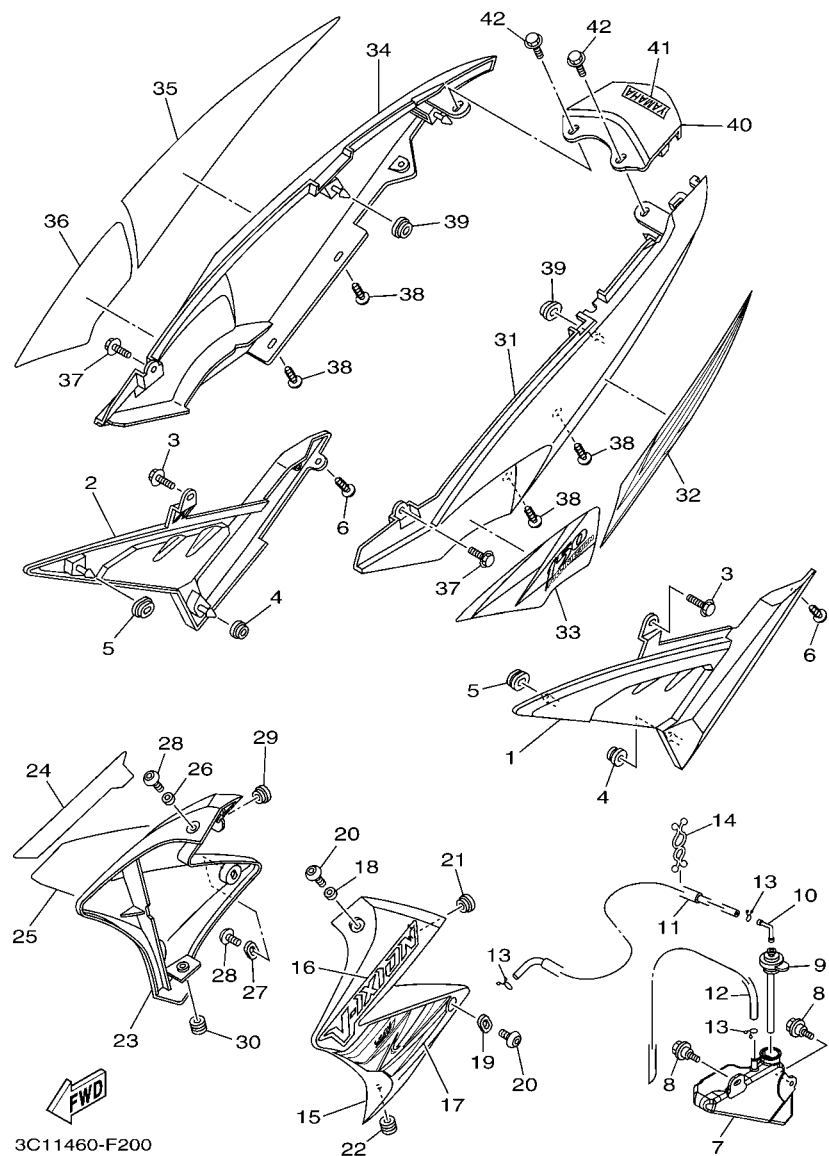


FIG. 20 SIDE COVER

REF. NO.	PART NO.	DESCRIPTION	3C11				REMARKS
22	90480-10623	GROMMET	1				
23	3C1-F137X-00-33	SCOOP, AIR 2	1				UR FOR YB
	3C1-F137X-00-P0	SCOOP, AIR 2	1				UR FOR DRMK
	3C1-F137X-00-P1	SCOOP, AIR 2	1				UR FOR DPBMC
24	3C1-F137N-01	GRAPHIC 1	1				UR FOR YB
	3C1-F137N-11	GRAPHIC 1	1				UR FOR DRMK
	3C1-F137N-21	GRAPHIC 1	1				UR FOR DPBMC
25	3C1-F137R-00	GRAPHIC 3	1				UR FOR YB
	3C1-F137R-10	GRAPHIC 3	1				UR FOR DRMK
	3C1-F137R-20	GRAPHIC 3	1				UR FOR DPBMC
26	90387-06897	COLLAR	1				
27	3C1-F1748-00	COLLAR	1				
28	90149-06821	SCREW	2				
29	90480-12320	GROMMET	1				
30	90480-10623	GROMMET	1				
31	3C1-F1731-00-33	COVER, SIDE 3	1				UR FOR YB
	3C1-F1731-00-P0	COVER, SIDE 3	1				UR FOR DRMK
	3C1-F1731-00-P1	COVER, SIDE 3	1				UR FOR DPBMC
32	3C1-F173E-00	GRAPHIC 1	1				UR FOR YB
	3C1-F173E-10	GRAPHIC 1	1				UR FOR DRMK
	3C1-F173E-20	GRAPHIC 1	1				UR FOR DPBMC
33	3C1-F174G-00	GRAPHIC 3	1				UR FOR YB
	3C1-F174G-10	GRAPHIC 3	1				UR FOR DRMK
	3C1-F174G-20	GRAPHIC 3	1				UR FOR DPBMC
34	3C1-F1741-00-33	COVER, SIDE 4	1				UR FOR YB
	3C1-F1741-00-P0	COVER, SIDE 4	1				UR FOR DRMK
	3C1-F1741-00-P1	COVER, SIDE 4	1				UR FOR DPBMC

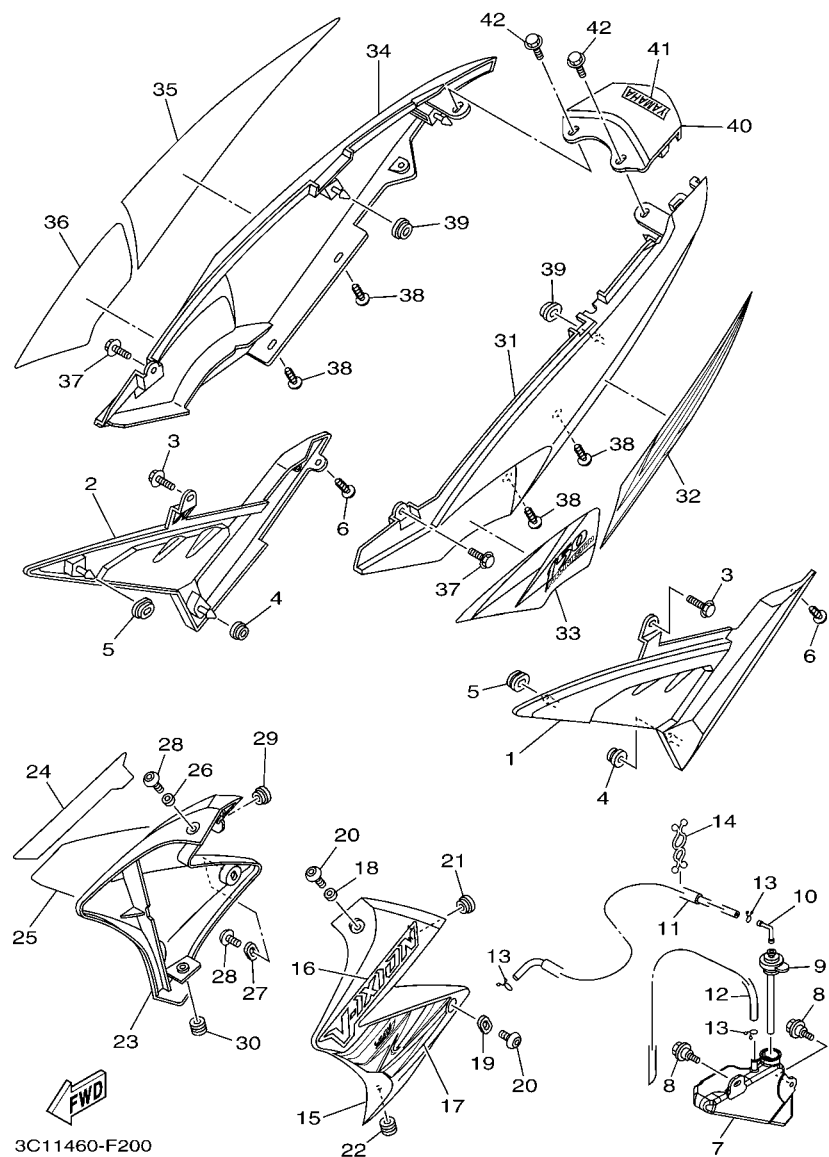


FIG. 20 SIDE COVER

REF. NO.	PART NO.	DESCRIPTION	3C11				REMARKS
35	3C1-F173F-00	GRAPHIC 2	1				UR FOR YB
	3C1-F173F-10	GRAPHIC 2	1				UR FOR DRMK
	3C1-F173F-20	GRAPHIC 2	1				UR FOR DPBMC
36	3C1-F174H-00	GRAPHIC 4	1				UR FOR YB
	3C1-F174H-10	GRAPHIC 4	1				UR FOR DRMK
	3C1-F174H-20	GRAPHIC 4	1				UR FOR DPBMC
37	90119-06044	BOLT, WITH WASHER	2				
38	97707-50014	SCREW, TRUSS HEAD TAPPING	4				
39	90480-01558	GROMMET	2				
40	3C1-F171E-00-33	COVER, SIDE 5	1				UR FOR YB
	3C1-F171E-00-P0	COVER, SIDE 5	1				UR FOR DRMK
	3C1-F171E-00-P1	COVER, SIDE 5	1				UR FOR DPBMC
41	5BP-F153E-00	EMBLEM, YAMAHA	1				UR FOR YB
	5BP-F153E-10	EMBLEM, YAMAHA	1				UR FOR DRMK
	5BP-F153E-20	EMBLEM, YAMAHA	1				UR FOR DPBMC
42	90119-06044	BOLT, WITH WASHER	2				

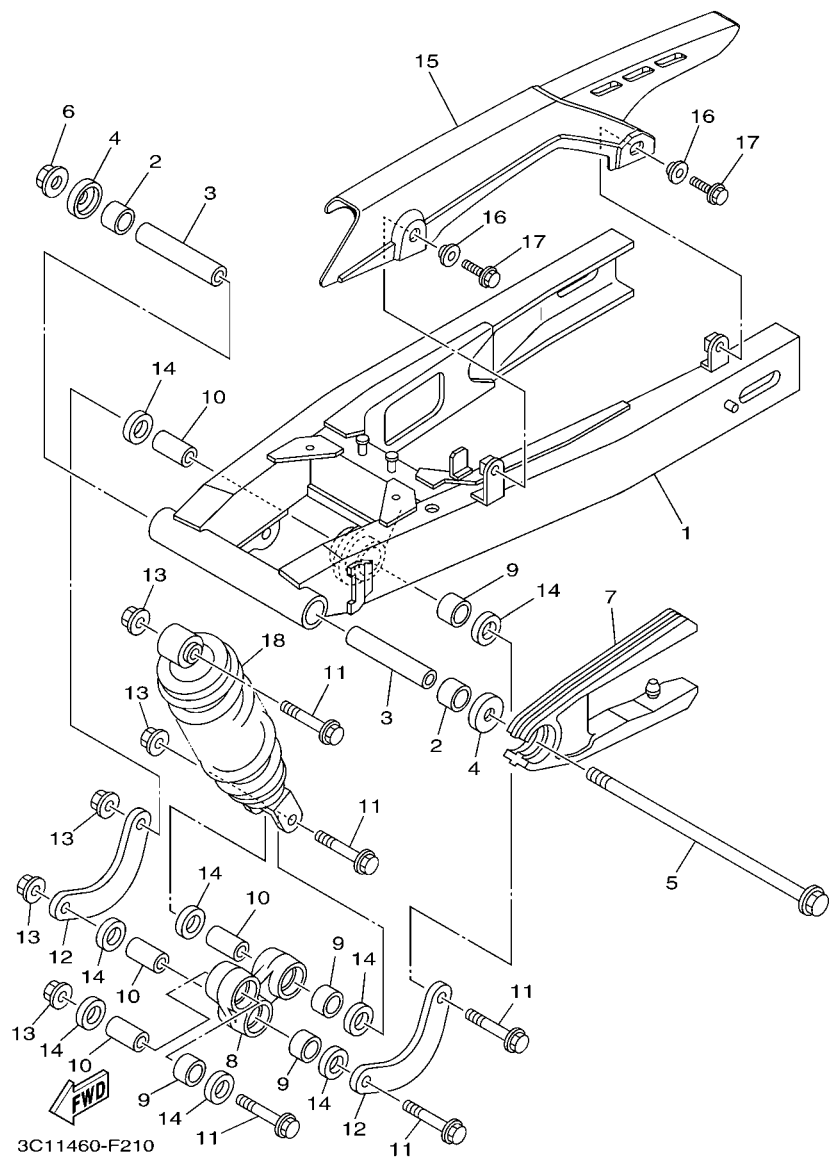


FIG. 21 REAR ARM & SUSPENSION

REF. NO.	PART NO.	DESCRIPTION	3C11				REMARKS
1	3C1-F2110-00	REAR ARM COMP.	1				
2	93317-218Y1	BEARING	2				
3	3C1-F2184-00	BUSH	2				
4	5BP-F2129-00	COVER, THRUST 2	2				
5	3C1-F2141-00	SHAFT, PIVOT	1				
6	9570L-12500	NUT, FLANGE	1				
7	3C1-F2151-00	SEAL, GUARD	1				
8	3C1-F217A-00	ARM, RELAY	1				
9	93315-317Y1	BEARING	4				
10	90387-10814	COLLAR	4				
11	90105-10826	BOLT, FLANGE	5				
12	3C1-F217F-00	ROD, CONNECTING 1	2				
13	90179-10805	NUT	5				
14	93106-17801	OIL SEAL	8				
15	3C1-F2311-00	CASE, CHAIN	1				
16	90387-09803	COLLAR	2				
17	95827-06014	BOLT, FLANGE	2				
18	3C1-F2210-00	SHOCK ABSORBER ASSY, REAR	1				

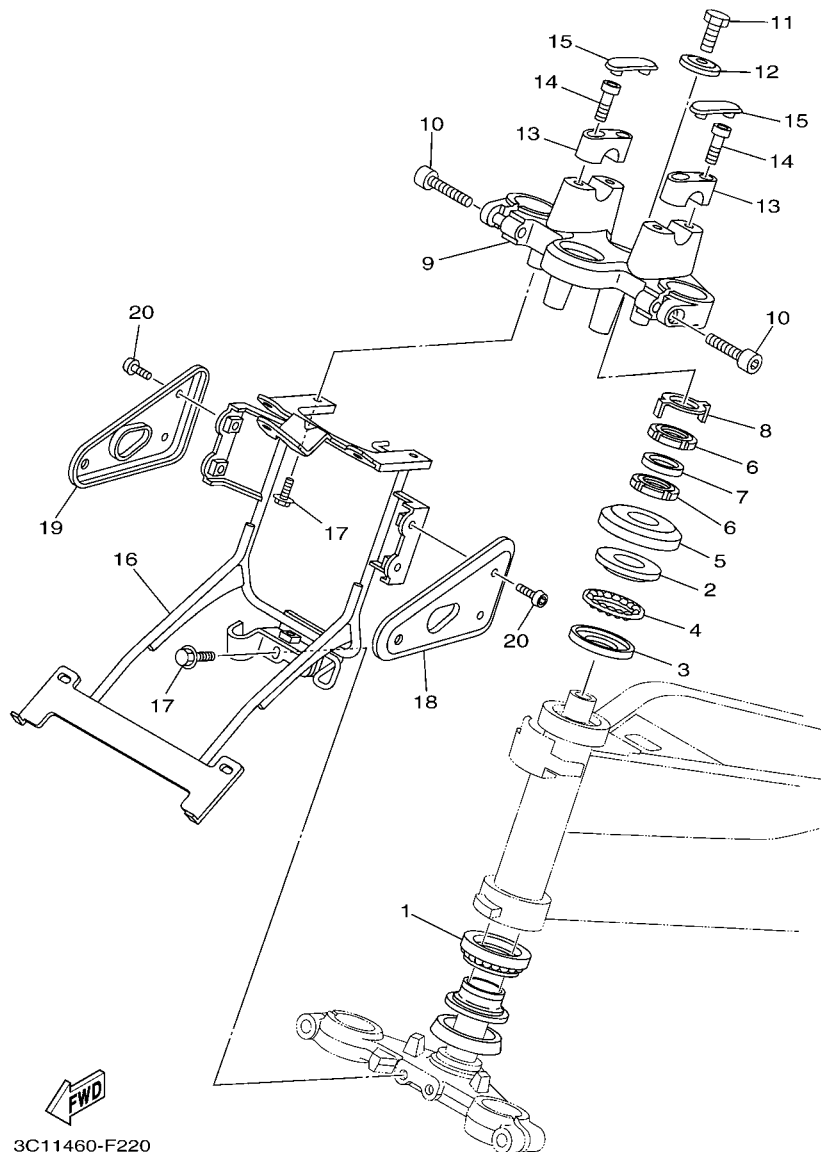


FIG. 22 STEERING

REF. NO.	PART NO.	DESCRIPTION	3C11				REMARKS
1	5BP-F3873-01	BEARING, STEERING UPPER	1				
2	183-23411-00	RACE, BALL 1	1				
3	183-23412-00	RACE, BALL 2	1				
4	5TL-2341E-00	RETAINER, BALL BEARING	1				
5	5BP-F3416-00	COVER, BALL RACE 2	1				
6	90179-25615	NUT	2				
7	90202-26142	WASHER, PLATE	1				
8	5BP-F3418-00	WASHER, SPECIAL	1				
9	3C1-F3435-00	CROWN, HANDLE	1				
10	9131L-08030	BOLT	2				
11	90105-10006	BOLT, FLANGE	1				
12	90209-10020	WASHER	1				
13	3KA-F3441-10	HOLDER, HANDLE UPPER	2				
14	91317-08030	BOLT	4				
15	3KA-F3469-00	CAP, BOLT	2				
16	3C1-F3174-00	STAY, HEADLIGHT	1				
17	95027-06012	BOLT, FLANGE	4				
18	3C1-F3121-00	COVER, UPPER 1	1				
19	3C1-F3131-00	COVER, UPPER 2	1				
20	92014-06010	BOLT, BUTTON HEAD	4				

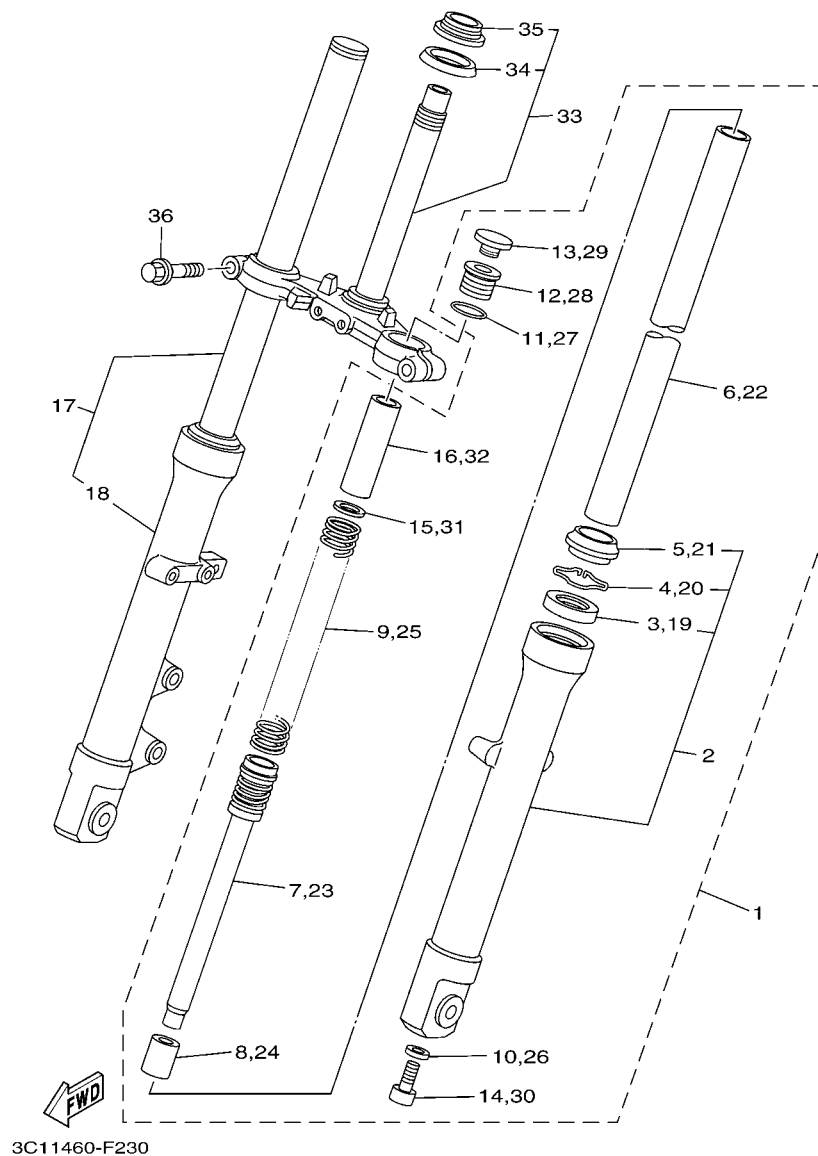


FIG. 23 FRONT FORK

REF. NO.	PART NO.	DESCRIPTION	3C11				REMARKS
1	3C1-F3102-01	FRONT FORK ASSY (L.H)	1				
2	3C1-F3126-01	.TUBE, OUTER (LEFT)	1				
3	5BP-F3145-00	..OIL SEAL	1				
4	22W-F3156-L0	..CLIP, OIL SEAL	1				
5	5BP-F3144-00	..SEAL, DUST	1				
6	3C1-F3110-01	.INNER TUBE COMP.1	1				
7	3C1-F3170-00	.CYLINDER COMP., FRONT FORK	1				
8	2JK-F3173-00	.SPINDLE, TAPER	1				
9	3C1-F3141-00	.SPRING, FRONT FORK	1				
10	509-F3158-L0	.GASKET	1				
11	2JK-F3114-00	.GASKET	1				
12	3C1-F3111-00	.BOLT, CAP	1				
13	2N4-23168-00	.PLUG	1				
14	2JK-F3181-00	.BOLT, HEXAGON SOCKET HEAD	1				
15	2JK-F3149-01	.WASHER, SPRING UPPER	1				
16	3C1-F3118-01	.SPACER	1				
17	3C1-F3103-01	FRONT FORK ASSY (R.H)	1				
18	3C1-F3136-01	.TUBE, OUTER (RIGHT)	1				
19	5BP-F3145-00	..OIL SEAL	1				
20	22W-F3156-L0	..CLIP, OIL SEAL	1				
21	5BP-F3144-00	..SEAL, DUST	1				
22	3C1-F3110-01	.INNER TUBE COMP.1	1				
23	3C1-F3170-00	.CYLINDER COMP., FRONT FORK	1				
24	2JK-F3173-00	.SPINDLE, TAPER	1				
25	3C1-F3141-00	.SPRING, FRONT FORK	1				
26	509-F3158-L0	.GASKET	1				
27	2JK-F3114-00	.GASKET	1				

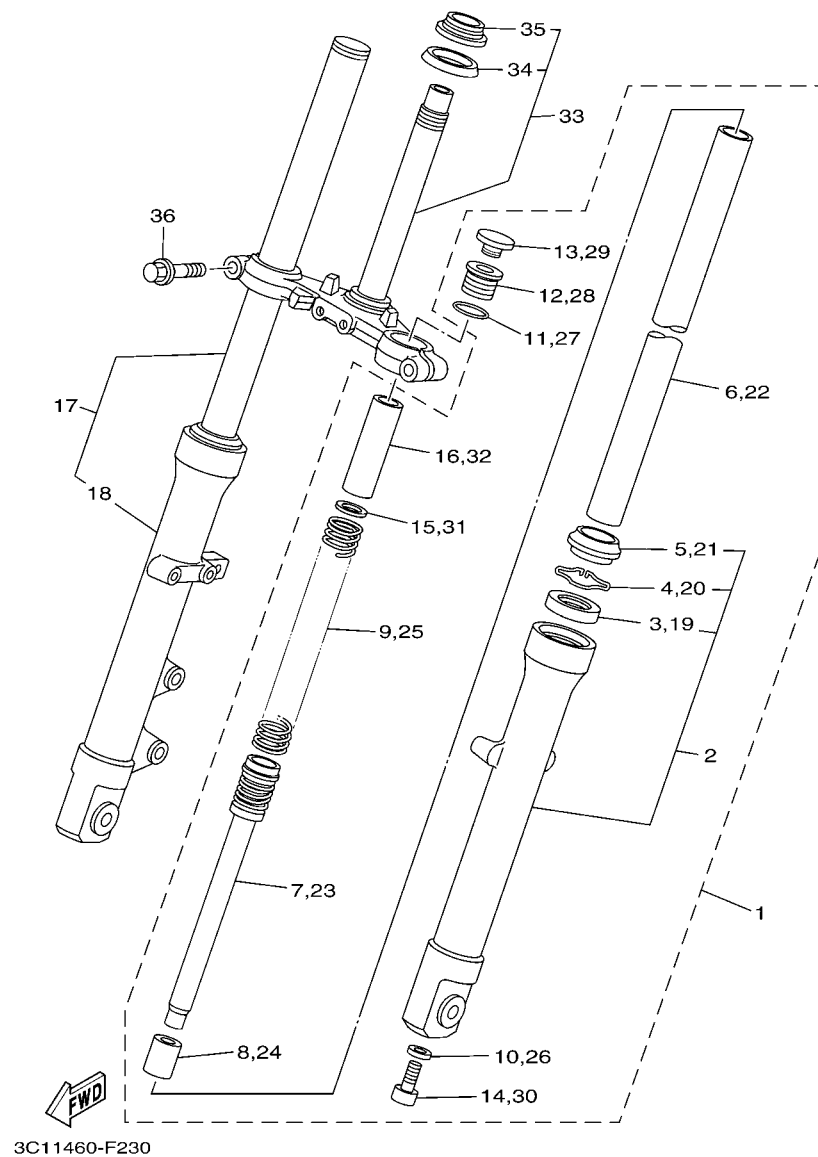


FIG. 23 FRONT FORK

[illegible]

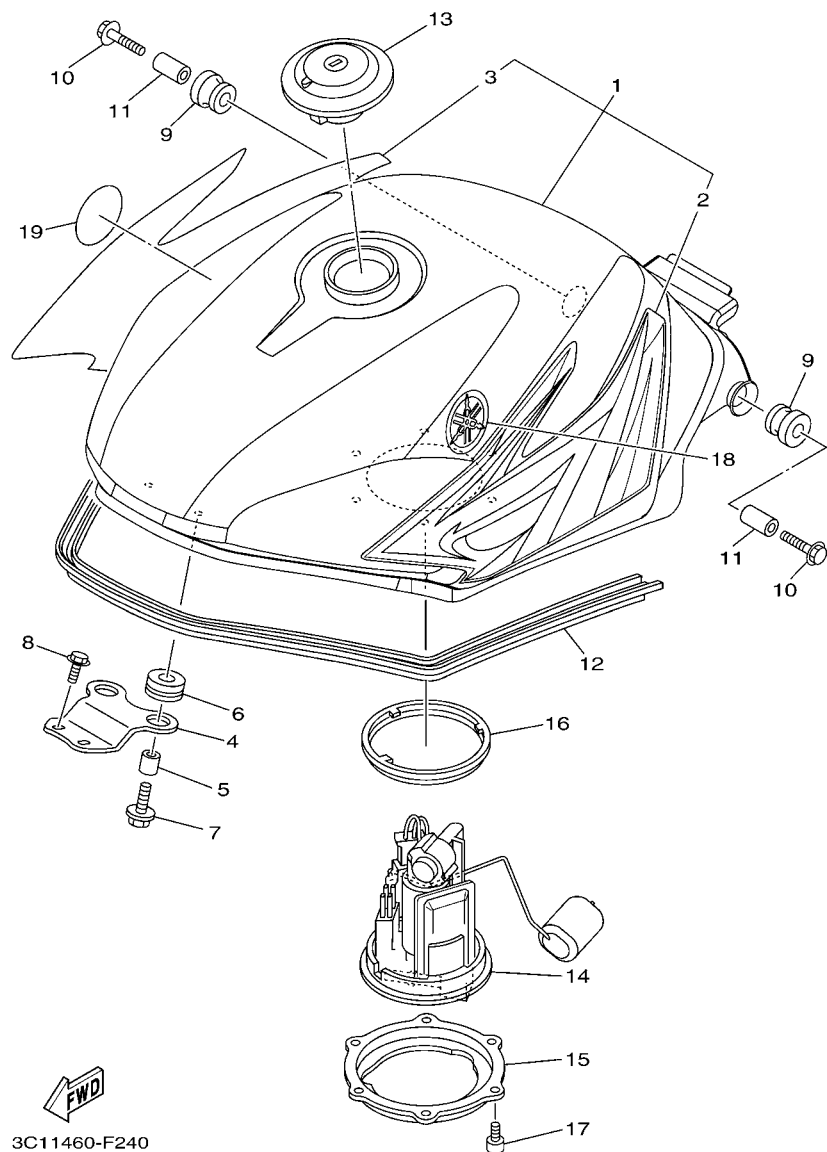


FIG. 24 FUEL TANK

REF. NO.	PART NO.	DESCRIPTION	3C11					REMARKS
1	3C1-F4100-00-33	FUEL TANK ASSY	1					UR FOR YB
	3C1-F4100-10-P0	FUEL TANK ASSY	1					UR FOR DRMK
	3C1-F4100-20-P0	FUEL TANK ASSY	1					UR FOR DPBMC
2	3C1-F4244-00	.GRAPHIC, FUEL TANK 1	1					UR FOR YB
	3C1-F4244-10	.GRAPHIC, FUEL TANK 1	1					UR FOR DRMK
	3C1-F4244-20	.GRAPHIC, FUEL TANK 1	1					UR FOR DPBMC
3	3C1-F4245-00	.GRAPHIC, FUEL TANK 2	1					UR FOR YB
	3C1-F4245-10	.GRAPHIC, FUEL TANK 2	1					UR FOR DRMK
	3C1-F4245-20	.GRAPHIC, FUEL TANK 2	1					UR FOR DPBMC
4	3C1-F4191-00	BRACKET, FUEL TANK 1	1					
5	90387-06892	COLLAR	2					
6	90480-15483	GROMMET	2					
7	90119-06877	BOLT, WITH WASHER	2					
8	9582L-06016	BOLT, FLANGE	2					
9	90480-18549	GROMMET	2					
10	95827-06030	BOLT, FLANGE	2					
11	90387-06890	COLLAR	2					
12	3C1-F4188-00	MOLD, FUEL TANK	1					
13	3C1-F4610-00	CAP ASSY	1					
14	3C1-E3907-00	FUEL PUMP COMP.	1					
15	3C1-F4491-00	BRACKET, FUEL PUMP	1					
16	3C1-F4486-00	O-RING	1					
17	91317-05010	BOLT	6					
18	3C1-F416B-00	EMBLEM	1					
19	3C1-F417B-00	EMBLEM	1					

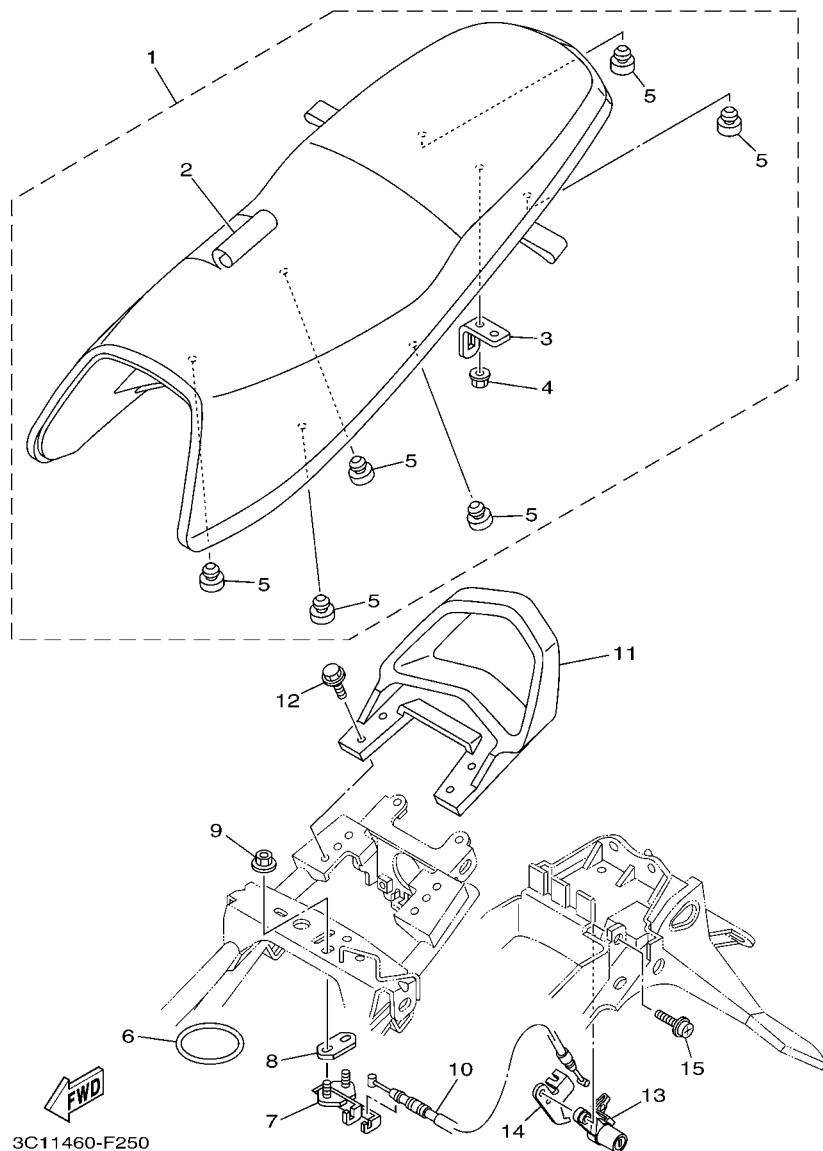


FIG. 25 SEAT

REF. NO.	PART NO.	DESCRIPTION	3C11				REMARKS
1	3C1-F4730-00	DOUBLE SEAT ASSY	1				
2	3C1-F4731-00	.COVER, SEAT	1				
3	3C1-F4728-00	.BRACKET, SEAT	1				
4	9570L-06500	.NUT, FLANGE	1				
5	3C1-F4741-00	.PAD, SEAT	6				
6	5TL-H2131-00	BAND, BATTERY	1				
7	5BP-F4780-00	SEAT LOCK ASSY	1				
8	5BP-F4792-00	PLATE	1				
9	95707-06500	NUT, FLANGE	2				
10	3C1-F478E-00	CABLE, SEAT LOCK	1				
11	3C1-F4773-00-35	HANDLE, SEAT	1				SL
12	95827-08020	BOLT, FLANGE	4				
13	3C1-F4799-00	ROTOR ASSY	1				
14	1S7-F117K-00	STAY, LOCK	1				
15	90159-06033	SCREW, WITH WASHER	1				



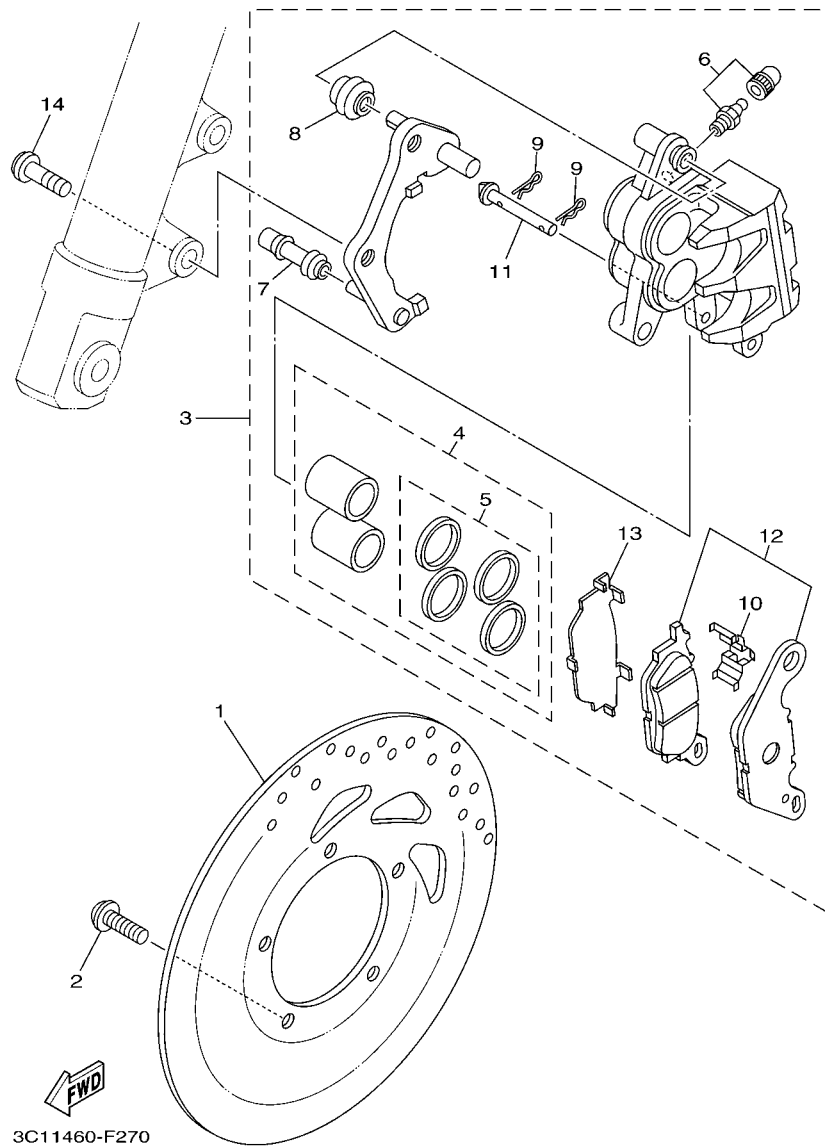


FIG. 27 FRONT BRAKE CALIPER

REF. NO.	PART NO.	DESCRIPTION	3C11				REMARKS
1	3C1-F582U-00	DISK, BRAKE (RIGHT)	1				
2	90111-08815	BOLT,HEX. SOCKET BUTTON	5				
3	3C1-F580U-00	CALIPER ASSY (RIGHT)	1				
4	3C1-W0057-00	.PISTON ASSY, CALIPER	1				
5	3C1-W0047-00	..CALIPER SEAL KIT	1				
6	5TL-W0048-00	.BLEED SCREW KIT	1				
7	5YP-F5937-00	.BOOT 2	1				
8	5YP-F5917-00	.BOOT, CALIPER	1				
9	5YP-F5925-01	.CLIP	2				
10	5YP-F5919-00	.SUPPORT, PAD	1				
11	5YP-F5924-00	.PIN, PAD	1				
12	4C9-W0045-00	.BRAKE PAD KIT	1				
13	5YP-F5939-00	.CLIP, PAD	1				
14	90149-10802	SCREW	2				

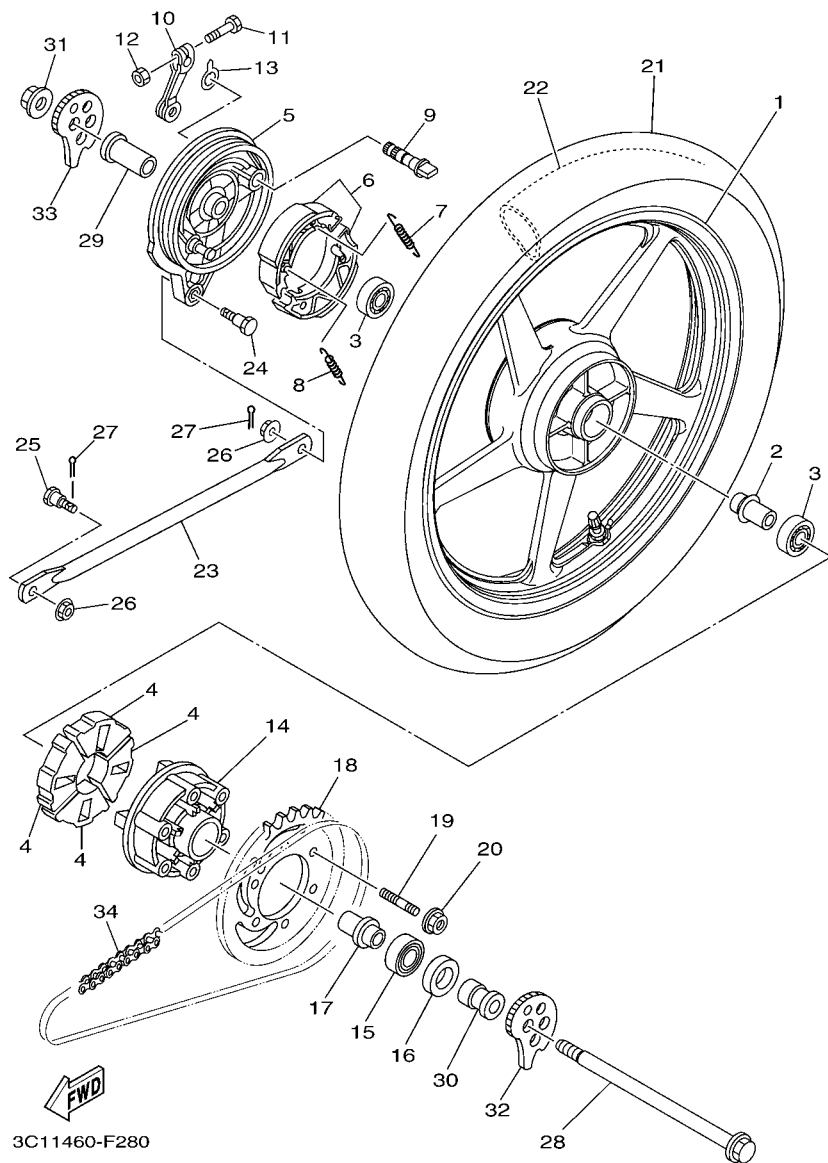


FIG. 28 REAR WHEEL

REF. NO.	PART NO.	DESCRIPTION	3C11				REMARKS
1	3C1-F5338-00	CAST WHEEL, REAR	1				
2	5BP-F530S-00	COLLAR ASSY	1				
3	93306-252X7	BEARING	2				
4	3C1-F5364-00	DAMPER	4				
5	5BP-F5321-01-33	PLATE, BRAKE SHOE	1				YB
6	5BP-F530K-00	BRAKE SHOE SET	1				
7	90506-12001	SPRING, TENSION	1				
8	90506-15001	SPRING, TENSION	1				
9	5BP-F5351-00	CAMSHAFT	1				
10	5BP-F5355-00	LEVER, CAMSHAFT	1				
11	90101-06278	BOLT	1				
12	95307-06600	NUT	1				
13	4ST-F533A-00	PLATE, INDICATOR	1				
14	3C1-F5366-00-33	CLUTCH, HUB	1				YB
15	93306-004XV	BEARING	1				
16	93106-26815	OIL SEAL	1				
17	90387-158V4	COLLAR	1				
18	3C1-F5442-00	SPROCKET, DRIVEN (42T)	1				
19	90116-08812	BOLT, STUD	6				
20	95607-08200	NUT, SELF-LOCKING	6				
21	94109-17801	TIRE (90/90-17 49P NR72)	1				UR INOUE
	94109-17802	TIRE (90/90-17 49P D102A)	1				UR DUNLOP
22	94218-17800	TUBE (3.00/3.25-17 TR4)	1				UR INOUE
	94227-17805	TUBE (2.75-17 TR4)	1				UR DUNLOP
23	3C1-F5371-00	BAR, TENSION	1				
24	90109-08063	BOLT	1				
25	90109-08825	BOLT	1				

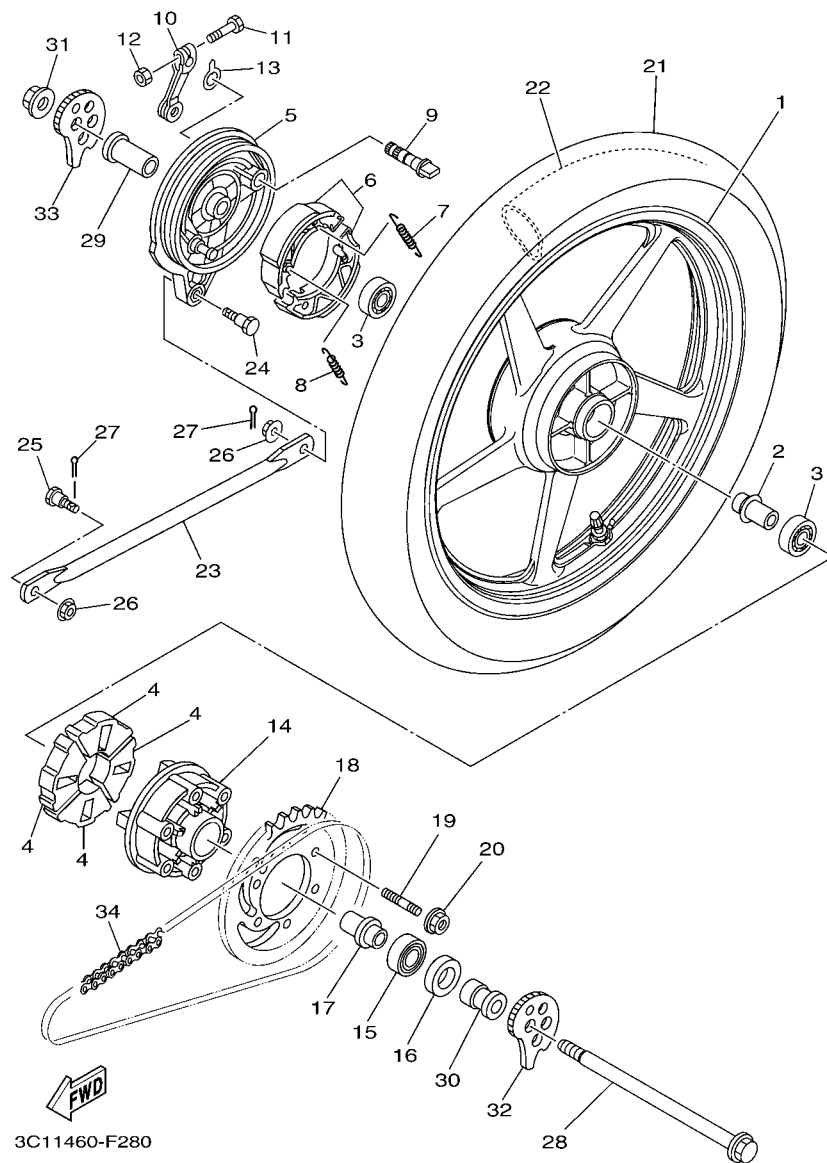


FIG. 28 REAR WHEEL

[illegible]

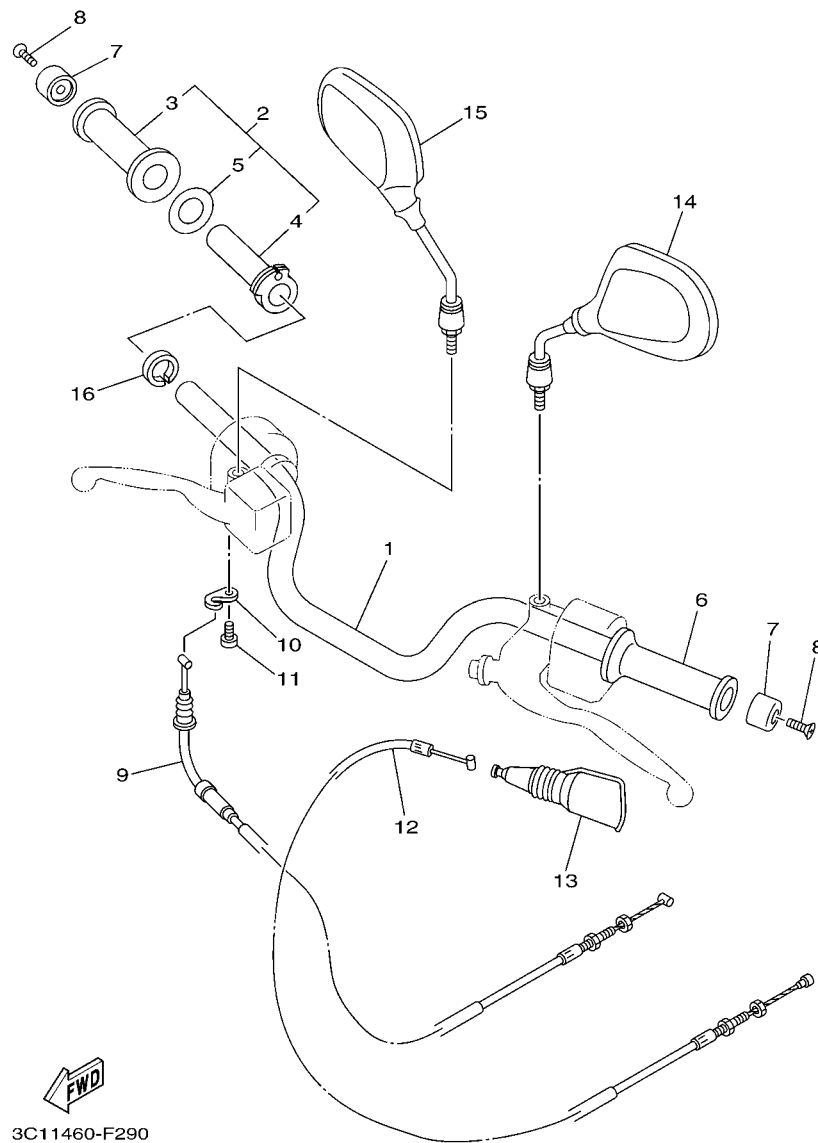


FIG. 29 STEERING HANDLE & CABLE

REF. NO.	PART NO.	DESCRIPTION	3C11				REMARKS
1	3C1-F6111-00	HANDLEBAR	1				
2	3C1-F6240-00	GRIP ASSY	1				
3	4NS-F6242-10	.GRIP (RIGHT)	1				
4	3C1-F6243-00	.TUBE, THROTTLE GUIDE	1				
5	90201-261L1	.WASHER, PLATE	1				
6	4NS-F6241-10	GRIP	1				
7	5ER-F6246-00	END, GRIP	2				
8	98707-06035	SCREW, FLAT HEAD	2				
9	3C1-F6311-00	CABLE, THROTTLE 1	1				
10	3C1-F6393-00	HOLDER	1				
11	98507-05016	SCREW, PAN HEAD	1				
12	3C1-F6335-00	CABLE, CLUTCH	1				
13	3RS-F6372-00	COVER, HANDLE LEVER 1	1				
14	5MX-F6280-00	REAR VIEW MIRROR ASSY (LEFT)	1				
15	5MX-F6290-00	REAR VIEW MIRROR ASSY (RIGHT)	1				
16	90387-22660	COLLAR	1				

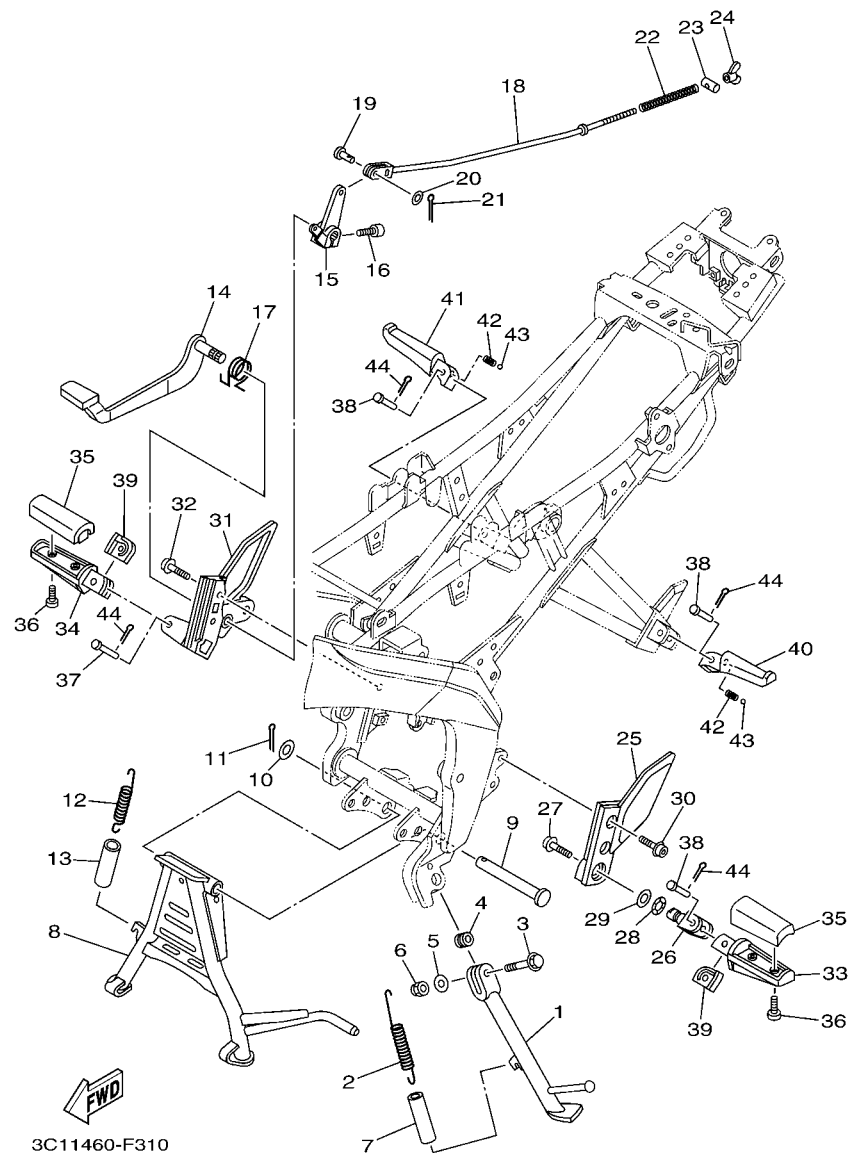


FIG. 31 STAND & FOOTREST

REF. NO.	PART NO.	DESCRIPTION	3C11				REMARKS
1	3C1-F7311-00	STAND, SIDE	1				
2	90506-28800	SPRING, TENSION	1				
3	90105-106A7	BOLT, FLANGE	1				
4	90387-10003	COLLAR	1				
5	92907-10600	WASHER, PLATE	1				
6	95617-10100	NUT, U	1				
7	90445-21848	HOSE (L70)	1				
8	3C1-F7111-00	STAND, MAIN	1				
9	3C1-F7112-00	SHAFT, MAIN STAND	1				
10	90201-163H8	WASHER, PLATE	1				
11	91401-30030	PIN, COTTER	1				
12	90506-35003	SPRING, TENSION	1				
13	90445-21848	HOSE (L70)	1				
14	3C1-F7211-00	PEDAL, BRAKE	1				
15	3C1-F7262-00	LEVER	1				
16	91317-06020	BOLT	1				
17	3C1-F7216-00	SPRING, RETURN	1				
18	3C1-F7231-00	ROD, BRAKE	1				
19	91701-06018	PIN, CLEVIS	1				
20	92907-06600	WASHER, PLATE	1				
21	91401-20012	PIN, COTTER	1				
22	90501-10245	SPRING, COMPRESSION	1				
23	90249-12008	PIN	1				
24	90175-06013	NUT, WING	1				
25	3C1-F7452-00	BRACKET, FOOTREST 1	1				
26	5BP-F7411-00	FOOTREST 1	1				
27	90110-10801	BOLT, HEXAGON SOCKET HEAD	1				

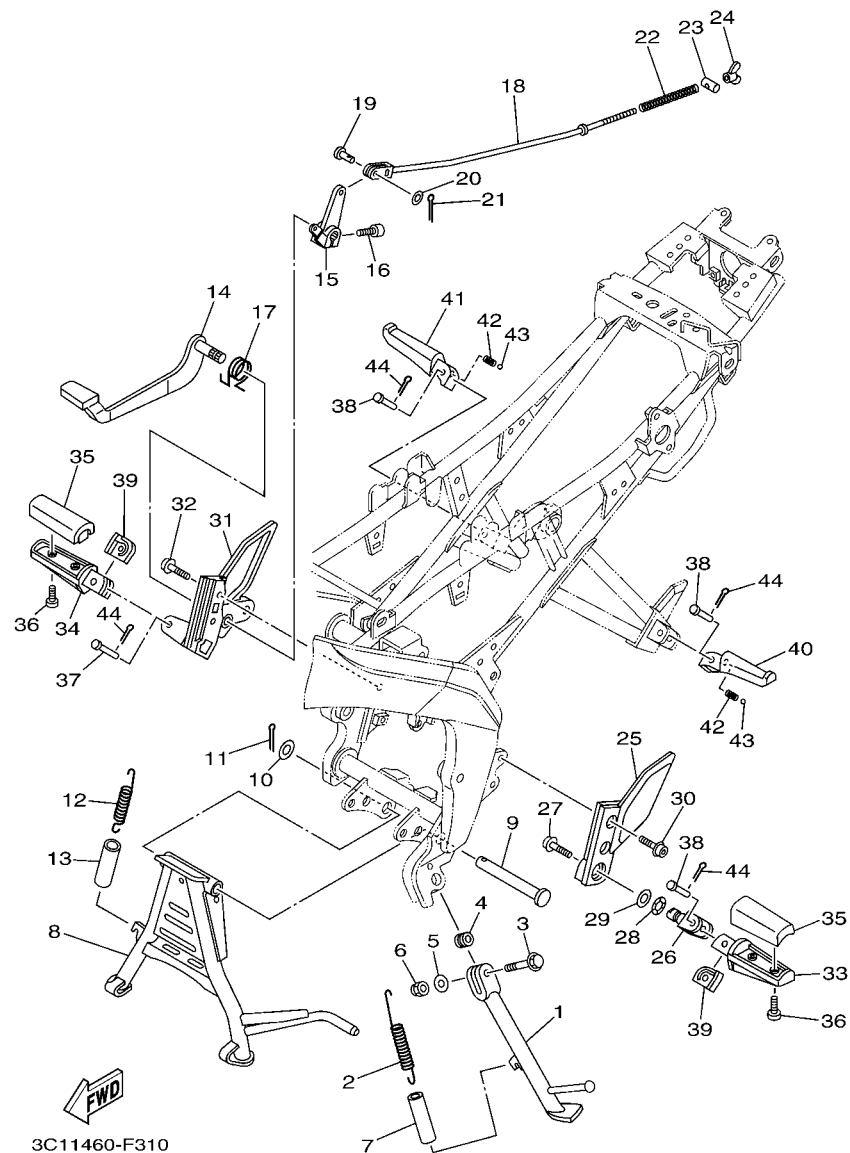


FIG. 31 STAND & FOOTREST

REF. NO.	PART NO.	DESCRIPTION	3C11				REMARKS
28	90206-17084	WASHER, WAVE	1				
29	90201-173U5	WASHER, PLATE	1				
30	90110-08803	BOLT, HEXAGON SOCKET HEAD	2				
31	3C1-F7462-00	BRACKET, FOOTREST 2	1				
32	90110-08803	BOLT, HEXAGON SOCKET HEAD	2				
33	5BP-F7451-00	FOOTREST	1				
34	5BP-F7461-00	FOOTREST	1				
35	3C1-F7413-00	COVER, FOOTREST	2				
36	90157-05079	SCREW, PAN HEAD	4				
37	90240-08145	PIN, CLEVIS	1				
38	90240-08144	PIN, CLEVIS	3				
39	3C1-F7426-00	SPRING, RETURN	2				
40	3C1-F7431-00	FOOTREST, REAR 1	1				
41	3C1-F7441-00	FOOTREST, REAR 2	1				
42	90501-12743	SPRING, COMPRESSION	2				
43	93501-04830	BALL	2				
44	91401-25015	PIN, COTTER	4				

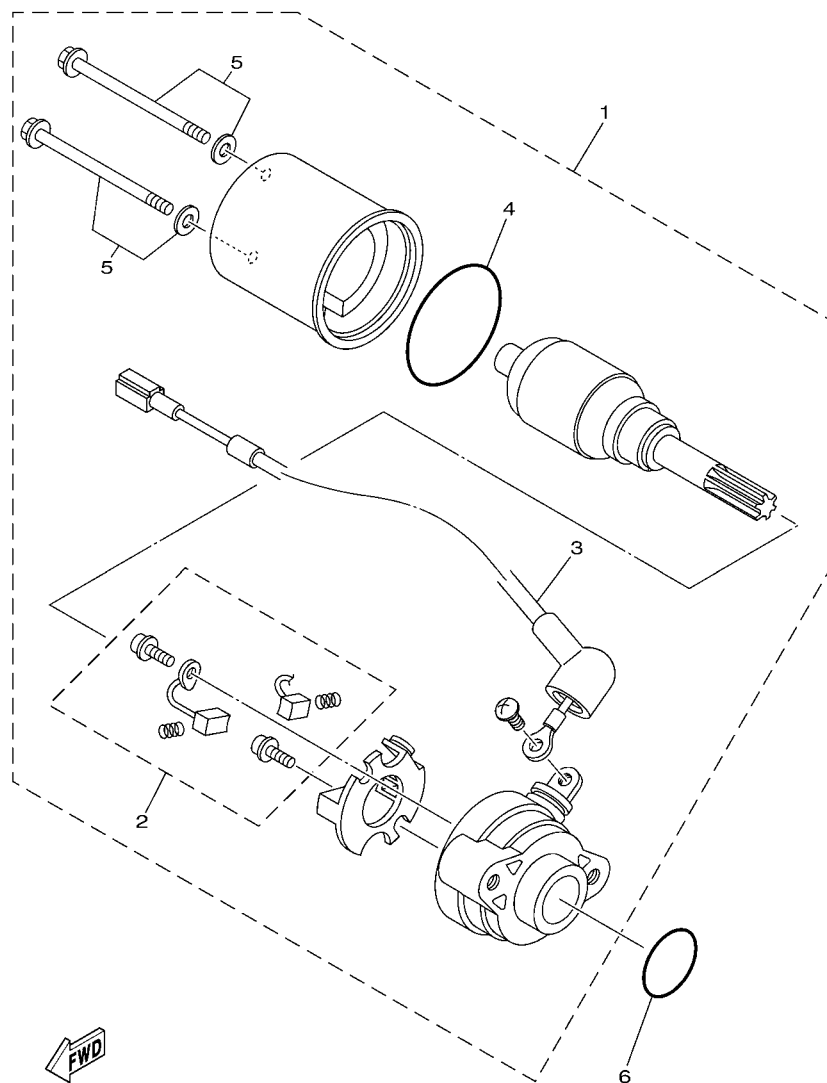


FIG. 33 STARTING MOTOR

[illegible]

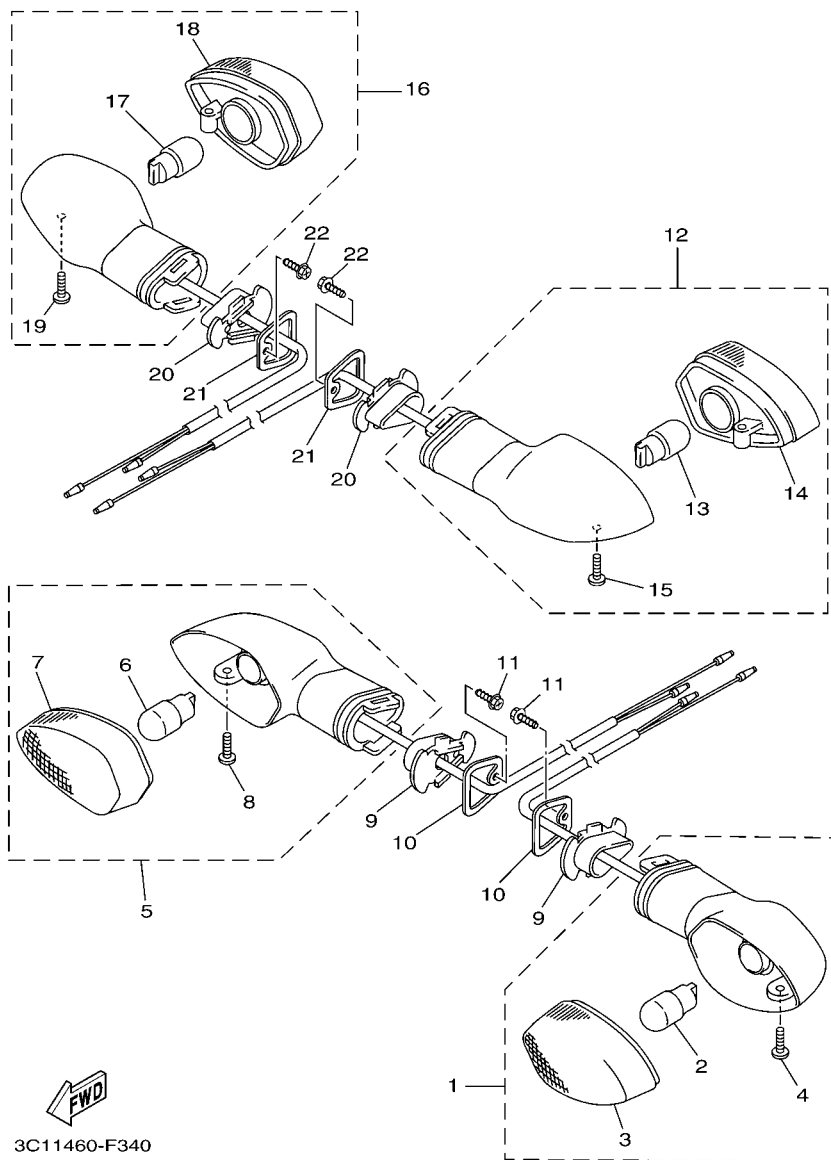


FIG. 34 FLASHER LIGHT

REF. NO.	PART NO.	DESCRIPTION	3C11				REMARKS
1	3C1-H3310-00	FRONT FLASHER LIGHT ASSY 1	1				AMBER
2	5LL-H3311-00	.BULB, FLASHER (12V-10W)	1				
3	3C1-H333A-00	.LENS COMP	1				
4	97706-04012	.SCREW, TAPPING	1				
5	3C1-H3320-00	FRONT FLASHER LIGHT ASSY 2	1				
6	5LL-H3311-00	.BULB, FLASHER (12V-10W)	1				AMBER
7	3C1-H334A-00	.LENS COMP	1				
8	97706-04012	.SCREW, TAPPING	1				
9	3C1-H3318-00	STAY, FLASHER 1	2				
10	3KA-H331L-00	PLATE, STOPPER	2				
11	90163-04800	SCREW, TAPPING	2				AMBER
12	3C1-H3330-00	REAR FLASHER LIGHT ASSY 1	1				
13	5LL-H3311-00	.BULB, FLASHER (12V-10W)	1				
14	3C1-H334A-00	.LENS COMP	1				
15	97706-04012	.SCREW, TAPPING	1				
16	3C1-H3340-00	REAR FLASHER LIGHT ASSY 2	1				AMBER
17	5LL-H3311-00	.BULB, FLASHER (12V-10W)	1				
18	3C1-H333A-00	.LENS COMP	1				
19	97706-04012	.SCREW, TAPPING	1				
20	3C1-H3318-00	STAY, FLASHER 1	2				
21	3KA-H331L-00	PLATE, STOPPER	2				
22	90163-04800	SCREW, TAPPING	2				

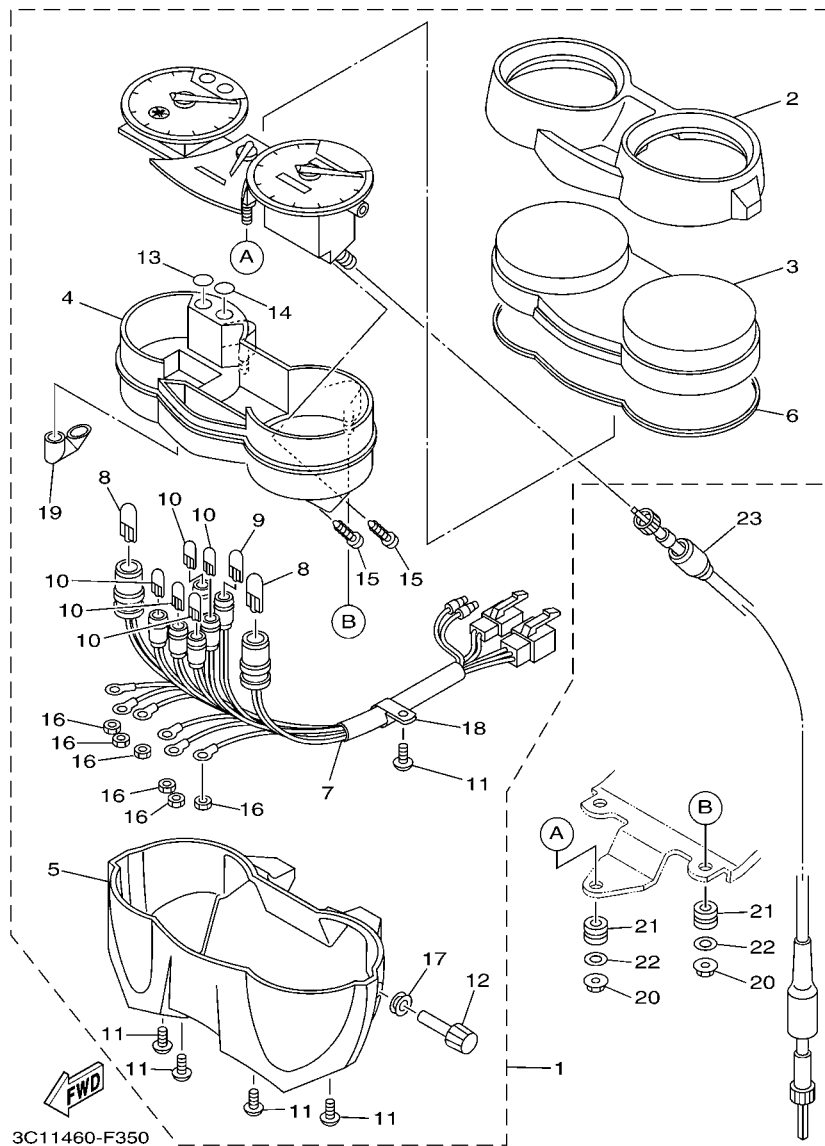


FIG. 35 METER

REF. NO.	PART NO.	DESCRIPTION	3C11				REMARKS
1	3C1-H3500-00	METER ASSY	1				
2	3C1-H353G-00	.CASE, UPPER	1				
3	3C1-H3511-00	.LENS, SPEEDOMETER	1				
4	3C1-H353A-00	.CASE COMP.	1				
5	3C1-H359E-00	.CASE	1				
6	3C1-H357K-00	.PACKING, METER	1				
7	3C1-H355H-00	.SOCKET CORD ASSY	1				
8	3C1-H3518-00	.BULB, METER (12V-3.4W T10)	2				
9	3C1-H3518-10	.BULB, METER (12V-1.5W T6.5)	1				
10	5HH-H3517-00	.BULB (14V-3W T6.5)	5				
11	9770M-40010	.SCREW, TAPPING	5				
12	3C1-H3578-00	.KNOB, TRIP METER	1				
13	3C1-H356C-00	.LENZ, PILOT 1	1				
14	3C1-H356F-00	.LENZ, PILOT 2	1				
15	9890L-04008	.SCREW, BIND	2				
16	9530N-03600	.NUT	6				
17	3C1-H357L-00	.PACKING, METER 2	1				
18	3C1-H3595-00	.CLAMP	1				
19	3C1-H411V-00	.CAP	4				
20	9570M-06500	NUT, FLANGE	3				
21	90480-10801	GROMMET	3				
22	90201-06830	WASHER, PLATE	3				
23	3C1-H3550-00	SPEEDOMETER CABLE ASSY	1				

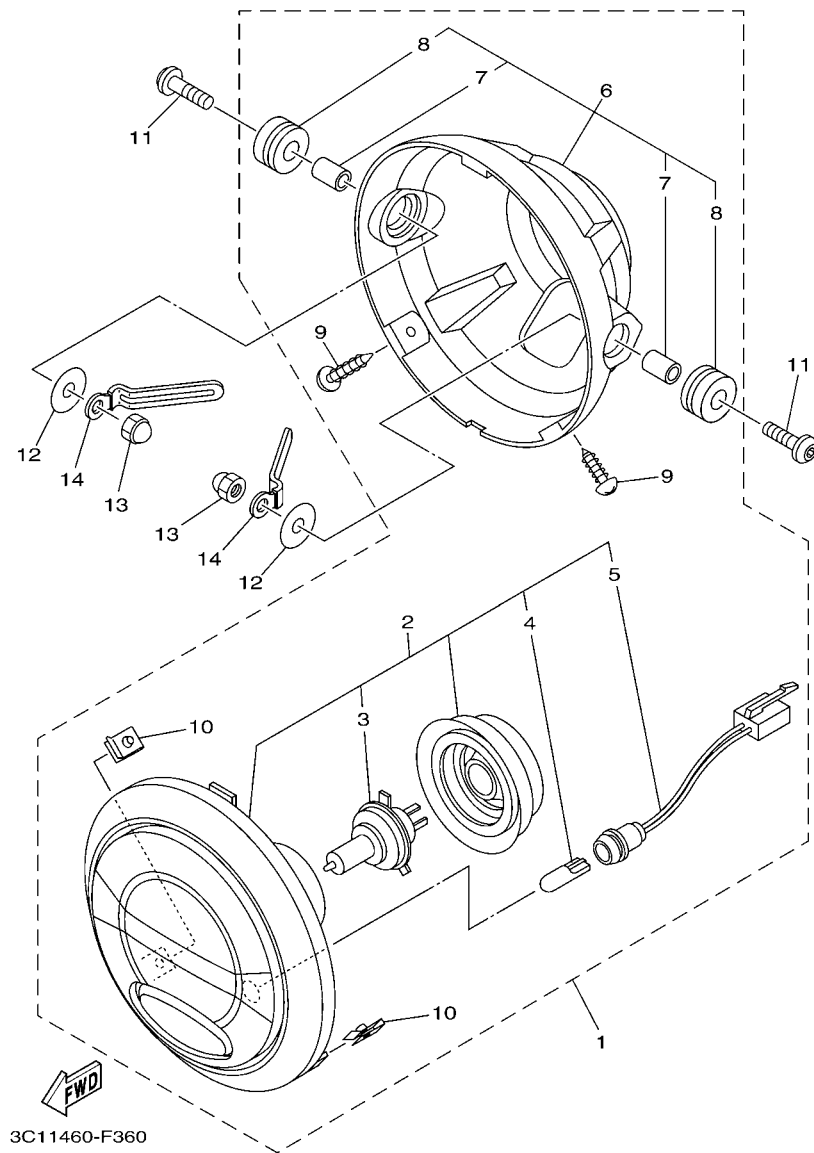


FIG. 36 HEADLIGHT

REF. NO.	PART NO.	DESCRIPTION	3C11				REMARKS
1	3C1-H4300-00	HEADLIGHT ASSY	1				
2	3C1-H4310-00	.HEADLIGHT UNIT ASSY	1				
3	3C1-H4314-00	..BULB, HEADLIGHT (12V-35/35W)	1				
4	3C1-H4314-10	..BULB, HEADLIGHT (12V-5W)	1				
5	3C1-H4150-00	..SOCKET CORD ASSY 2	1				
6	3C1-H4130-10	..BODY ASSY, HEADLIGHT	1				
7	3C1-H4145-10	..COLLAR, BODY FITTING	2				
8	3C1-H4163-00	..DAMPER	2				
9	3C1-H4325-00	..SCREW, RIM FITTING	2				
10	3C1-H331B-00	..NUT, SPRING	2				
11	90111-08818	BOLT,HEX. SOCKET BUTTON	2				
12	90201-08612	WASHER, PLATE	2				
13	90176-08040	NUT, CROWN	2				
14	90462-08001	CLAMP	2				

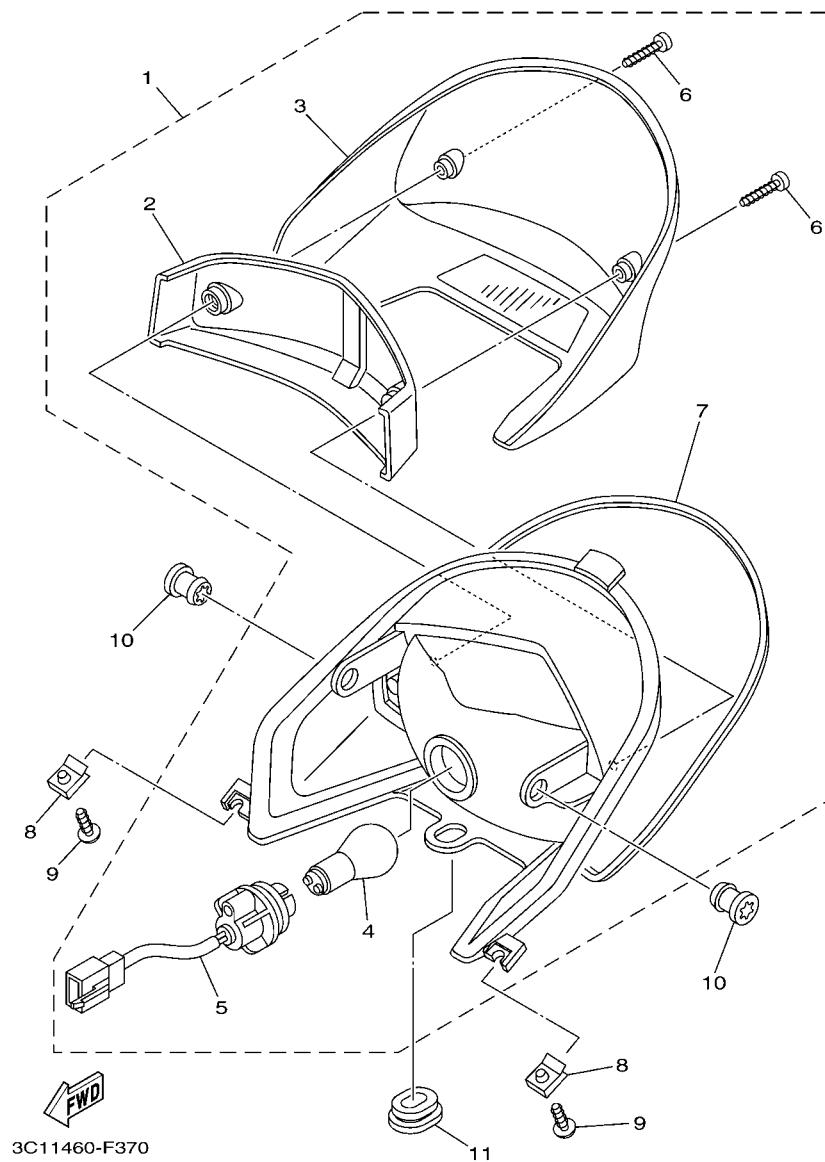


FIG. 37 TAILLIGHT

[illegible]



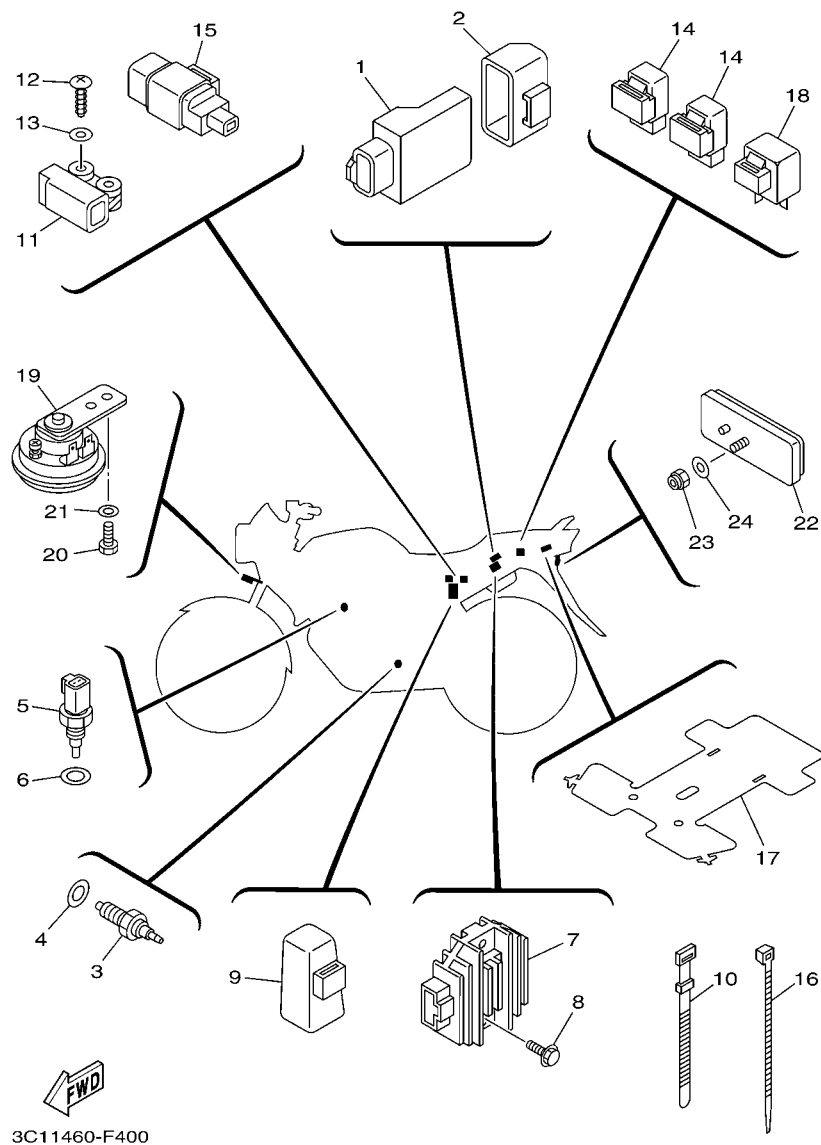


FIG. 40 ELECTRICAL 2

REF. NO.	PART NO.	DESCRIPTION	3C11				REMARKS
1	3C1-H591A-00	ENGINE CONTROL UNIT ASSY	1				
2	3C1-H5546-00	BAND	1				
3	3C1-H2540-00	NEUTRAL SWITCH ASSY	1				
4	90430-10148	GASKET	1				
5	5YP-85790-00	THERMOSENSOR ASSY	1				
6	90430-12801	GASKET	1				
7	3C1-H1960-00	RECTIFIER & REGULATOR ASSY	1				
8	95807-06020	BOLT, FLANGE	2				
9	5TP-H1940-00	STARTER RELAY ASSY	1				
10	3RS-H3936-00	BAND, SWITCH CORD	2				
11	3C1-H2576-00	LEAN ANGLE SENSOR	1				
12	97707-40012	SCREW, TAPPING	2				
13	90201-04804	WASHER, PLATE	2				
14	3C1-H1950-00	RELAY ASSY	2				
15	3C1-H1965-00	CONDENSER, SMOOTHING	1				
16	90464-36800	CLAMP	6				
17	3C1-H2599-00	COVER, CONNECTER	1				
18	2D5-H3350-00	FLASHER RELAY ASSY	1				
19	3C1-H3371-00	HORN	1				
20	97007-06012	BOLT	1				
21	92907-06600	WASHER, PLATE	1				
22	3C1-H5130-00	REAR REFLECTOR ASSY	1				
23	95607-05100	NUT, U	1				
24	90201-05725	WASHER, PLATE	1				

NUMERICAL INDEX

PART NO.	REF. NO.	PART NO.	REF. NO.	PART NO.	REF. NO.	PART NO.	REF. NO.	PART NO.	REF. NO.	PART NO.	REF. NO.
3C1-11454-00	2 - 21	1S7-E2111-00	3 - 1	3C1-E4450-00	8 - 20	3C1-E6324-00	14 - 13	3C1-F137N-21	20 - 24	3C1-F1871-00	20 - 7
3C1-11531-00	2 - 22	3C1-E2113-00	3 - 4	3C1-E4452-00	8 - 22	3C1-E6331-00	14 - 11	3C1-F137P-00	20 - 17	3C1-F1875-00	20 - 9
3C1-11536-00	2 - 15	3S0-E2118-00	3 - 5	3C1-E4453-00	8 - 21	3C1-E6333-00	14 - 15	3C1-F137P-10	20 - 17	3C1-F2110-00	21 - 1
3C1-11603-00	2 - 14	2S6-E2119-00	3 - 3	3C1-E4485-00	8 - 26	3C1-E6337-00	14 - 16	3C1-F137P-20	20 - 17	5BP-F2129-00	21 - 4
3C1-11681-00	2 - 3	1S7-E2121-00	3 - 2	1S7-E4613-00	9 - 10	3C1-E6344-00	14 - 20	3C1-F137R-00	20 - 25	3C1-F2141-00	21 - 5
5YP-12117-00	3 - 6	5YP-E2126-00	3 - 7	3C1-E4710-00	9 - 1	3C1-E6345-00	14 - 24	3C1-F137R-10	20 - 25	3C1-F2151-00	21 - 7
3C1-12159-00	3 - 9	1S7-E2151-00	3 - 8	3C1-E4728-00	9 - 3	3C1-E6351-00	14 - 14	3C1-F137R-20	20 - 25	3C1-F217A-00	21 - 8
	3 - 12	1S7-E2156-00	3 - 14	1S7-E4737-00	9 - 5	3C1-E6356-00	14 - 18	3C1-F137W-00-33	20 - 15	3C1-F217F-00	21 - 12
1B9-12241-00	4 - 13	5YP-E2157-00	4 - 8	5TP-E4747-00	18 - 8	3C1-E6358-00	14 - 17	3C1-F137W-00-P0	20 - 15	3C1-F2184-00	21 - 3
5YP-12411-00	6 - 1	1S7-E2161-00	3 - 11	3C1-E4758-00	9 - 2	3C1-E6371-00	14 - 7	3C1-F137W-00-P1	20 - 15	3C1-F2210-00	21 - 18
3C1-13770-00	8 - 9	3C1-E2170-00	4 - 1	1S7-E482K-00	1 - 8	3C1-E6383-00	14 - 9	3C1-F137X-00-33	20 - 23	3C1-F2311-00	21 - 15
3C1-13971-00	8 - 11	2P2-E2210-00	4 - 17	1S7-E4840-00	1 - 9	3C1-E6384-00	14 - 8	3C1-F137X-00-P0	20 - 23	3C1-F2327-00	18 - 12
5JW-14104-00	8 - 14	5MX-E2213-00	4 - 18	3C1-E4877-00	8 - 40	3C1-E7121-00	15 - 6	3C1-F137X-00-P1	20 - 23	3C1-F3102-01	23 - 1
2S5-1410H-00	8 - 15	5YP-E2231-00	4 - 12	3C1-E4881-00	8 - 43	3C1-E7131-00	15 - 5	3C1-F1511-00-33	19 - 1	3C1-F3103-01	23 - 17
5CA-14147-00	8 - 10	3C1-E2256-00	4 - 16	3C1-E4882-00	8 - 36	3C1-E7151-00	15 - 2	3C1-F1511-00-P0	19 - 1	3C1-F3110-01	23 - 6
1S4-14216-00	8 - 16	3C1-E2280-00	4 - 6	3C1-E4883-00	8 - 45	3C1-E7211-00	15 - 12	3C1-F1511-00-P1	19 - 1		23 - 22
3C1-16193-00	14 - 2	1S7-E2288-00	4 - 7	1S7-E4890-00	1 - 10	3C1-E7221-00	15 - 20	3C1-F1518-00	19 - 4	3C1-F3111-00	23 - 12
3C1-16357-00	14 - 25	5YP-E2405-00	6 - 5	3C1-E5150-00	10 - 1	3C1-E7231-00	15 - 18	5BP-F153E-00	20 - 41		23 - 28
3C1-16380-00	14 - 23	3C1-E240A-00	6 - 4	1S7-E5351-00	7 - 3	3C1-E7241-00	15 - 17	5BP-F153E-10	20 - 41	2JK-F3114-00	23 - 11
2N4-23168-00	23 - 13	1S7-E2413-00	6 - 2	3C1-E5362-00	11 - 16	3C1-E7251-00	15 - 14	5BP-F153E-20	20 - 41		23 - 27
	23 - 29	3C1-E2422-00	5 - 1	3C1-E5411-00	11 - 1	3C1-E7285-00	15 - 19	3C1-F1611-00	19 - 5	3C1-F3118-01	23 - 16
	22 - 2	1S7-E2428-00	5 - 3	3C1-E5418-00	11 - 9	3C1-E7402-00	15 - 11	3C1-F1621-00	19 - 6		23 - 32
183-23411-00	22 - 3	3C1-E2443-00	5 - 13	3C1-E5421-00	11 - 11	3C1-E7411-00	15 - 1	3C1-F1711-00	20 - 1	3C1-F3121-00	22 - 18
183-23412-00	22 - 4	1S7-E2450-00	5 - 7	3C1-E5441-00	4 - 19	3C1-E7456-00	15 - 27	3C1-F171E-00-33	20 - 40	3C1-F3126-01	23 - 2
5TL-2341E-00	23 - 34	5YP-E2462-00	6 - 8	3C1-E5451-00	11 - 2	3C1-E7471-00	15 - 9	3C1-F171E-00-P0	20 - 40	3C1-F3131-00	22 - 19
164-23462-00	30 - 6	3C1-E2467-00	6 - 14	3C1-E5461-00	11 - 12	3C1-E8101-00	17 - 4	3C1-F171E-00-P1	20 - 40	3C1-F3136-01	23 - 18
36Y-2589H-00	40 - 5	3C1-E2481-00	6 - 15	3C1-E5514-00	13 - 1	3C1-E8110-00	17 - 9	3C1-F1721-00	20 - 2	3C1-F3141-00	23 - 9
5YP-85790-00	1 - 1	3C1-E2482-00	6 - 17	3C1-E5521-00	13 - 2	5BP-E8112-00	17 - 14	3C1-F1731-00-33	20 - 31		23 - 25
1S7-E1102-00	4 - 9	5YP-E2671-00	6 - 7	3C1-E5524-00	13 - 5	1EG-E8113-01	17 - 10	3C1-F1731-00-P0	20 - 31	5BP-F3144-00	23 - 5
1S7-E111F-00	1 - 2	5YP-E2675-00	6 - 6	5YP-E5580-00	13 - 8	3C1-E8115-00	17 - 11	3C1-F1731-00-P1	20 - 31		23 - 21
1S7-E1133-10	8 - 34	3C1-E3300-00	7 - 1	5HV-E5583-00	13 - 9	3C1-E8119-00	17 - 2	3C1-F173E-00	20 - 32	5BP-F3145-00	23 - 3
3C1-E1166-00	1 - 19	3C1-E3324-00	7 - 8	3C1-E5598-00	4 - 15	3C1-E8140-00	17 - 1	3C1-F173E-10	20 - 32		23 - 19
3C1-E1181-00	5 - 4	3C1-E3327-00	7 - 13	5YP-E5614-00	13 - 10	3C1-E8337-00	17 - 3	3C1-F173E-20	20 - 32	2JK-F3149-01	23 - 15
1S7-E1185-01	1 - 6	1S7-E3411-00	7 - 4	3C1-E5620-00	12 - 17	3C1-E8511-00	16 - 2	3C1-F173F-00	20 - 35		23 - 31
1S7-E1191-00	1 - 14	1S7-E3440-00	7 - 7	3C1-E5641-00	12 - 2	3C1-E8512-00	16 - 3	3C1-F173F-10	20 - 35	22W-F3156-L0	23 - 4
1S7-E1196-00	5 - 5	3C1-E3447-00	7 - 9	3C1-E5651-00	12 - 12	3C1-E8513-00	16 - 4	3C1-F173F-20	20 - 35		23 - 20
3C1-E1311-00	1 - 23	3C1-E3542-00	8 - 3	3C1-E5661-00	12 - 1	3C1-E8531-00	16 - 5	3C1-F1741-00-33	20 - 34	509-F3158-L0	23 - 10
1S7-E1351-00	1 - 24	3C1-E3556-00	8 - 2	3C1-E5666-00	12 - 6	3C1-E8540-00	16 - 1	3C1-F1741-00-P0	20 - 34		23 - 26
3C1-E1400-00	2 - 1	5MX-E3575-01	8 - 17	3C1-E5671-00	12 - 4	3C1-F1110-00	18 - 1	3C1-F1741-00-P1	20 - 34	3C1-F3170-00	23 - 7
3C1-E1412-00	2 - 2	3C1-E3585-00	8 - 1	3C1-E5674-00	12 - 15	1S7-F117K-00	25 - 14	3C1-F1748-00	20 - 19		23 - 23
3C1-E1422-00	2 - 6	3C1-E3586-00	8 - 6	3C1-E5767-00	12 - 7	3C1-F118E-00	18 - 14		20 - 27	2JK-F3173-00	23 - 8
3C1-E1496-00	2 - 16	3C1-E3750-00	8 - 13	3C1-E6111-00	14 - 1	3C1-F118W-00	18 - 5	3C1-F174G-00	20 - 33		23 - 24
3C1-E1549-00	2 - 7	3C1-E3907-00	24 - 14	3C1-E6135-00	14 - 21	3C1-F1338-00	18 - 13	3C1-F174G-10	20 - 33	3C1-F3174-00	22 - 16
3C1-E1631-00	2 - 11	3C1-E4411-00	8 - 18	3C1-E6144-00	14 - 19	3C1-F137N-01	20 - 16	3C1-F174G-20	20 - 33	2JK-F3181-00	23 - 14
3C1-E1633-00	2 - 12	3C1-E4412-00	8 - 19	3C1-E6150-00	14 - 5		20 - 24	3C1-F174H-00	20 - 36		23 - 30
3C1-E1651-10	2 - 5	3C1-E4419-00	8 - 28	3C1-E6154-00	14 - 6	3C1-F137N-11	20 - 16	3C1-F174H-10	20 - 36	3C1-F3340-00	23 - 33
1S7-E1951-00	5 - 8	3C1-E441J-00	8 - 29	3C1-E6307-00	14 - 10		20 - 24	3C1-F174H-20	20 - 36	2JK-F3346-00	23 - 36
1S7-E1952-01	5 - 9	5TL-E443E-00	8 - 24	3C1-E6321-00	14 - 12	3C1-F137N-21	20 - 16	3C1-F1828-00	20 - 10	5BP-F3416-00	22 - 5

NUMERICAL INDEX

PART NO.	REF. NO.	PART NO.	REF. NO.	PART NO.	REF. NO.	PART NO.	REF. NO.	PART NO.	REF. NO.	PART NO.	REF. NO.
5BP-F3418-00	22 - 8	3C1-F5386-00	28 - 30	3C1-F8100-00	18 - 15	3C1-H3371-00	40 - 19	5TL-W0048-00	27 - 6	90179-12802	14 - 4
3C1-F3435-00	22 - 9	3C1-F5388-00	28 - 32	3C1-H1410-00	32 - 2	3C1-H3500-00	35 - 1	3C1-W0057-00	27 - 4	90179-14001	14 - 22
3KA-F3441-10	22 - 13	3C1-F5389-00	28 - 33	3C1-H1450-00	32 - 1	3C1-H3511-00	35 - 3	90101-06278	28 - 11	90179-25615	22 - 6
3KA-F3469-00	22 - 15	3C1-F5442-00	28 - 18	3C1-H1800-00	33 - 1	5HH-H3517-00	35 - 10	90105-08850	1 - 16	90183-05807	19 - 9
5BP-F3873-01	22 - 1	3C1-F580U-00	27 - 3	3AY-H1801-00	33 - 2	3C1-H3518-00	35 - 8	90105-10006	22 - 11		37 - 8
5BP-F3875-00	23 - 35	3C1-F582U-00	27 - 1	3AY-H1828-00	33 - 5	3C1-H3518-10	35 - 9	90105-10323	18 - 2	90183-06802	8 - 32
3C1-F4100-00-33	24 - 1	3C1-F583T-00	30 - 2	3AY-H182M-00	33 - 4	3C1-H353A-00	35 - 4	90105-106A7	31 - 3	90201-04804	40 - 13
3C1-F4100-10-P0	24 - 1	3C1-F5852-00	30 - 5	3C1-H183G-00	33 - 3	3C1-H353G-00	35 - 2	90105-10826	21 - 11	90201-05725	40 - 24
3C1-F4100-20-P0	24 - 1	3RW-F5854-00	30 - 4	5TP-H1940-00	40 - 9	3C1-H3550-00	35 - 23	90105-10829	18 - 3	90201-05817	9 - 9
3C1-F416B-00	24 - 18	3C1-F5855-00	30 - 8	3C1-H1950-00	40 - 14	3C1-H355H-00	35 - 7	90109-06183	19 - 8	90201-06072	6 - 11
3C1-F417B-00	24 - 19	3RW-F5867-00	30 - 7	3C1-H1960-00	40 - 7	3C1-H356C-00	35 - 13		20 - 8	90201-06830	35 - 22
3C1-F4188-00	24 - 12	3C1-F5872-00	30 - 1	3C1-H1965-00	40 - 15	3C1-H356F-00	35 - 14	90109-063F1	19 - 7	90201-08609	1 - 17
3C1-F4191-00	24 - 4	3C1-F5886-01	30 - 16	3C1-H2100-00	39 - 4	3C1-H3578-00	35 - 12	90109-06577	30 - 10	90201-08612	9 - 13
3C1-F4244-00	24 - 2	5YP-F5917-00	27 - 8	3C1-H2116-00	39 - 9	3C1-H357K-00	35 - 6	90109-08063	28 - 24		36 - 12
3C1-F4244-10	24 - 2	5YP-F5919-00	27 - 10	3C1-H2121-00	39 - 5	3C1-H357L-00	35 - 17	90109-08825	28 - 25	90201-10118	30 - 15
3C1-F4244-20	24 - 2	5YP-F5924-00	27 - 11	3C1-H2131-00	39 - 6	3C1-H3595-00	35 - 18	90110-08803	31 - 30	90201-105E8	13 - 3
3C1-F4245-00	24 - 3	5YP-F5925-01	27 - 9	5TL-H2131-00	25 - 6	3C1-H359E-00	35 - 5		31 - 32	90201-12019	14 - 3
3C1-F4245-10	24 - 3	5YP-F5937-00	27 - 7	3C1-H2150-00	39 - 7	3KA-H3912-00	38 - 5	90110-10801	31 - 27	90201-122H1	32 - 6
3C1-F4245-20	24 - 3	5YP-F5939-00	27 - 13	3C1-H2151-00	39 - 8	3KA-H3913-00	38 - 6	90111-08815	27 - 2	90201-15821	2 - 17
3C1-F4486-00	24 - 16	3C1-F6111-00	29 - 1	3C1-H2310-00	39 - 1	3C1-H3922-00	30 - 9	90111-08818	36 - 11	90201-163H8	31 - 10
3C1-F4491-00	24 - 15	3C1-F6240-00	29 - 2	1S7-H2370-00	39 - 3	3RS-H3936-00	40 - 10	90116-08812	28 - 19	90201-173F4	15 - 22
3C1-F4610-00	24 - 13	4NS-F6241-10	29 - 6	3C1-H2501-00	39 - 10	3KA-H3945-00	38 - 8	90119-06044	19 - 2	90201-173U5	31 - 29
3C1-F4728-00	25 - 3	4NS-F6242-10	29 - 3	3C1-H2530-00	39 - 12	3C1-H3969-00	38 - 1		20 - 3	90201-175F6	12 - 13
3C1-F4730-00	25 - 1	3C1-F6243-00	29 - 4	3C1-H2540-00	40 - 3	3C1-H3975-00	38 - 2		20 - 37	90201-19800	12 - 11
3C1-F4731-00	25 - 2	5ER-F6246-00	29 - 7	3C1-H2576-00	40 - 11	5BP-H3980-10	30 - 12		20 - 42	90201-20685	12 - 8
3C1-F4741-00	25 - 5	5MX-F6280-00	29 - 14	3C1-H2590-00	39 - 13	3C1-H411V-00	35 - 19	90119-06051	8 - 33	90201-20814	15 - 21
3C1-F4773-00-35	25 - 11	5MX-F6290-00	29 - 15	3C1-H2599-00	40 - 17	3C1-H4130-10	36 - 6	90119-06877	24 - 7	90201-20815	12 - 3
5BP-F4780-00	25 - 7	3C1-F6311-00	29 - 9	5BP-H2910-10	38 - 3	3C1-H4145-10	36 - 7	90123-08046	38 - 14	90201-25290	13 - 7
3C1-F478E-00	25 - 10	3C1-F6335-00	29 - 12	3KA-H2911-00	38 - 4	3C1-H4150-00	36 - 5	90149-06821	20 - 20	90201-261L1	29 - 5
5BP-F4792-00	25 - 8	3RS-F6372-00	29 - 13	5BP-H2917-00	38 - 7	3C1-H4163-00	36 - 8		20 - 28	90202-26142	22 - 7
3C1-F4799-00	25 - 13	3C1-F6393-00	29 - 10	3C1-H3310-00	34 - 1	3C1-H4300-00	36 - 1	90149-06829	4 - 14	90206-17084	31 - 28
3C1-F510C-00	26 - 2	3C1-F7111-00	31 - 8	5LL-H3311-00	34 - 2	3C1-H4310-00	36 - 2	90149-10802	27 - 14	90208-20003	14 - 30
3C1-F5168-00	26 - 1	3C1-F7112-00	31 - 9		34 - 6	3C1-H4314-00	36 - 3	90153-06803	1 - 3	90209-10020	22 - 12
3C1-F5181-00	26 - 10	4YY-F7114-00	9 - 4		34 - 13	3C1-H4314-10	36 - 4		1 - 25	90209-17285	15 - 3
3C1-F5186-00	26 - 9	3C1-F7211-00	31 - 14		34 - 17	3C1-H4325-00	36 - 9	90157-05079	31 - 36	90209-18208	15 - 15
3C1-F5190-00	26 - 8	3C1-F7216-00	31 - 17	3C1-H3318-00	34 - 9	3C1-H4704-00	37 - 7	90159-06033	25 - 15	90214-10800	2 - 18
5BP-F530K-00	28 - 6	3C1-F7231-00	31 - 18		34 - 20	3C1-H4710-00	37 - 1	90163-04800	34 - 11	90215-10284	2 - 29
5BP-F530S-00	28 - 2	3C1-F7262-00	31 - 15	3C1-H331B-00	36 - 10	3C1-H4714-00	37 - 4		34 - 22	90240-08144	31 - 38
5BP-F5321-01-33	28 - 5	3C1-F7311-00	31 - 1	3KA-H331L-00	34 - 10	3C1-H4721-00	37 - 2	90163-05803	8 - 23	90240-08145	31 - 37
3C1-F5338-00	28 - 1	5BP-F7411-00	31 - 26		34 - 21	3C1-H4724-00	37 - 6	90170-05302	3 - 10	90249-12008	31 - 23
4ST-F533A-00	28 - 13	3C1-F7413-00	31 - 35	3C1-H3320-00	34 - 5	3C1-H4733-00	37 - 3		3 - 13	90280-03017	2 - 10
5BP-F5351-00	28 - 9	3C1-F7426-00	31 - 39	3C1-H3330-00	34 - 12	3C1-H4735-00	37 - 5	90170-10405	2 - 30	90282-05031	2 - 28
5BP-F5355-00	28 - 10	3C1-F7431-00	31 - 40	3C1-H333A-00	34 - 3	3C1-H5130-00	40 - 22	90175-06013	31 - 24	90338-15802	18 - 9
3C1-F5364-00	28 - 4	3C1-F7441-00	31 - 41		34 - 18	3C1-H5546-00	40 - 2	90176-08040	36 - 13	90338-16008	8 - 30
3C1-F5366-00-33	28 - 14	5BP-F7451-00	31 - 33	3C1-H3340-00	34 - 16	3C1-H591A-00	40 - 1	90179-08148	38 - 13	90338-16148	18 - 11
3C1-F5371-00	28 - 23	3C1-F7452-00	31 - 25	3C1-H334A-00	34 - 7	5TL-W0041-01	30 - 3	90179-10805	18 - 4	90338-18122	18 - 10
3C1-F5381-00	28 - 28	5BP-F7461-00	31 - 34		34 - 14	4C9-W0045-00	27 - 12		21 - 13	90340-14805	11 - 5
3C1-F5383-00	28 - 29	3C1-F7462-00	31 - 31	2D5-H3350-00	40 - 18	3C1-W0047-00	27 - 5	90179-12802	12 - 18	90340-32810	11 - 7

NUMERICAL INDEX

PART NO.	REF. NO.	PART NO.	REF. NO.	PART NO.	REF. NO.	PART NO.	REF. NO.	PART NO.	REF. NO.	PART NO.	REF. NO.
90387-062M9	19 - 3	90480-10623	20 - 22	92907-06600	40 - 21	93410-22039	15 - 16	95607-06100	38 - 10	99009-17400	12 - 14
90387-064VW3	6 - 12		20 - 30	92907-10600	31 - 5	93450-16115	2 - 13	95607-08200	28 - 20	99009-19400	12 - 10
90387-06890	24 - 11	90480-10801	35 - 21	92990-06600	9 - 7	93501-04830	31 - 43	95607-12200	26 - 11	99009-20500	14 - 29
90387-06892	24 - 5	90480-12320	20 - 21	93101-10843	11 - 18	93503-16003	14 - 26	95607-14200	28 - 31	99480-05010	4 - 5
90387-06897	20 - 18		20 - 29	93102-12862	14 - 28	93604-08800	2 - 20	95617-08620	1 - 5		
	20 - 26	90480-13567	20 - 4	93102-12891	17 - 8	93608-30839	17 - 7	95617-10100	31 - 6		
90387-068S1	8 - 41	90480-13810	37 - 10	93102-20892	15 - 25	93822-14815	15 - 26	95707-06500	25 - 9		
90387-08813	18 - 7	90480-15363	6 - 9	93103-10801	5 - 2	94109-17801	28 - 21	95707-08500	9 - 11		
90387-09803	21 - 16	90480-15483	24 - 6	93106-17801	21 - 14	94109-17802	28 - 21		28 - 26		
90387-10003	31 - 4	90480-18549	24 - 9	93106-20814	26 - 4	94127-17805	26 - 6	95707-12500	32 - 5		
90387-10814	21 - 10	90501-030A0	13 - 11	93106-26815	28 - 16	94127-17806	26 - 6	9570L-06500	25 - 4		
90387-15810	2 - 23	90501-06800	16 - 6	93109-20800	12 - 19	94218-17800	28 - 22	9570L-12500	21 - 6		
90387-158V4	28 - 17	90501-10245	31 - 22	93210-09806	4 - 3	94227-17803	26 - 7	9570M-06500	35 - 20		
90387-17804	15 - 13	90501-12743	31 - 42	93210-108H5	38 - 15	94227-17805	26 - 7	95807-06020	40 - 8		
90387-22660	29 - 16	90501-16800	2 - 19	93210-11803	1 - 15		28 - 22	95817-06016	39 - 11		
90401-10812	30 - 14	90501-18576	7 - 5	93210-11805	2 - 24	94568-A8096	4 - 11	95817-06030	8 - 12		
90413-13800	8 - 44	90506-12001	28 - 7	93210-13803	2 - 25	94568-C0120	28 - 34	95817-08025	9 - 12		
90430-06014	1 - 4	90506-15001	28 - 8	93210-148F8	11 - 6	94700-00872	1 - 18	95817-08040	9 - 14		
	1 - 13	90506-28800	31 - 2	93210-19809	5 - 16	94700-00873	1 - 18	9581L-08020	18 - 6		
	1 - 26	90506-35003	31 - 12	93210-198F9	11 - 17	95027-06010	4 - 10	95827-06014	21 - 17		
90430-09800	8 - 5	90508-26803	12 - 5	93210-26805	33 - 6		15 - 28	95827-06025	6 - 10		
90430-10148	40 - 4	90508-32837	17 - 5	93210-32807	8 - 7	95027-06012	5 - 12	95827-06030	24 - 10		
90430-12801	40 - 6	91317-05010	24 - 17	93210-328G3	11 - 8		22 - 17	95827-08020	25 - 12		
90445-08831	20 - 11	91317-06016	12 - 16	93210-34802	7 - 6	95027-06014	1 - 11	9582L-06016	24 - 8		
90445-08832	20 - 12		32 - 4	93210-54805	7 - 12	95027-06016	30 - 17	97007-06012	40 - 20		
90445-12804	6 - 19	91317-06020	4 - 20	93210-84801	5 - 6	95027-06020	1 - 12	97007-06016	39 - 2		
90445-21848	31 - 7		13 - 12	93306-000Y3	5 - 10		6 - 3	97007-06025	38 - 11		
	31 - 13		31 - 16	93306-001X2	4 - 4	95027-06025	5 - 11	97024-06020	17 - 15		
90450-28801	6 - 16	91317-06025	32 - 3	93306-003Y7	15 - 23		5 - 14	97027-06014	8 - 42		
	6 - 18	91317-06100	1 - 22	93306-004XR	15 - 7		30 - 13	97080-06008	9 - 8		
90450-39802	8 - 39	91317-08030	22 - 14	93306-004XV	28 - 15	95027-06050	5 - 15	97706-04012	34 - 4		
90462-08001	36 - 14	9131L-08030	22 - 10	93306-201XA	26 - 5	9502L-06012	7 - 14		34 - 8		
90464-14807	20 - 14	91401-20012	17 - 13	93306-203XK	2 - 27	9502L-06016	11 - 10		34 - 15		
90464-36800	40 - 16		28 - 27	93306-204YL	15 - 24	9502L-06020	7 - 10		34 - 19		
90467-08003	20 - 13		31 - 21	93306-252X1	15 - 8	9502L-06040	10 - 6	97707-40012	40 - 12		
90467-08092	8 - 4	91401-25015	31 - 44	93306-252X7	28 - 3		11 - 4	97707-50014	20 - 6		
90467-10805	6 - 20	91401-30030	31 - 11	93306-252Y9	2 - 26		11 - 14		20 - 38		
90467-12800	8 - 25	91701-06018	31 - 19	93306-301XE	26 - 3	9502L-06045	10 - 4		37 - 9		
90467-13064	8 - 35	91810-14809	1 - 20	93306-305X7	2 - 9	9502L-06050	11 - 15	9770M-40010	35 - 11		
90467-13802	8 - 38		1 - 21	93306-305YF	2 - 8	9502L-06055	10 - 3	98507-05016	29 - 11		
90467-15012	8 - 37		10 - 2	93306-906Y0	4 - 2	9502L-06070	10 - 5	98507-05025	7 - 2		
90467-16800	8 - 46		11 - 3	93310-325X1	13 - 6	9502L-06080	7 - 11	98517-06012	15 - 10		
90467-20050	8 - 27		11 - 13	93310-528YB	2 - 4	9502L-06090	11 - 19	98707-03008	38 - 9		
90467-23801	8 - 31	91811-10005	1 - 7	93315-112Y8	14 - 27	9502N-06020	8 - 8	98707-06035	29 - 8		
90480-01558	20 - 5	92014-06010	22 - 20	93315-317Y1	21 - 9	95307-06600	28 - 12	9890L-04008	35 - 15		
	20 - 39	92907-06200	17 - 12	93317-218Y1	21 - 2	9530N-03600	35 - 16	98980-06010	9 - 6		
	37 - 11	92907-06600	31 - 20	93410-20038	12 - 9	95607-05100	40 - 23	99001-10600	17 - 6		
90480-01803	6 - 13		38 - 12		15 - 4	95607-06100	30 - 11	99009-10400	13 - 4		